

# GROUP OVERVIEW



## ABOUT THE COMPANY

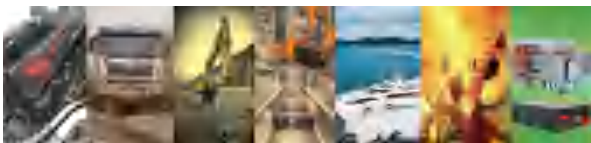
Weichai Holding Group, based in Shandong, China, is the most competitive manufacturer in the machinery industry, providing extensive cutting-edge products and service with its six primary segments, including Automotive, Construction Machinery, Powertrain, Automated Warehouse Solution, Luxury Yacht and Financial Products.

As the newest strategic segment in Weichai Group, New Energy Technology is applied in Hybrid Powertrain, Li-ion Battery, Fuel Cell and E-motor to serve all our markets as they adopt zero-emission. (Passenger car, Urban bus, VAN, Heavy-duty truck, etc.)

For more than 70 years, persevering in the commitment of serving the global customers with sustainable development and better life, the Group stretched its strategic footholds on every continent. Customers regard Weichai as their most reliable and dependable partner which has always been

helping them develop the business and enjoy the life. The group possesses almost 10,000 staff at more than 150 sites all over the world.

## BUSINESS SEGMENTS



## WEICHAI POWER

### AT A GLANCE

Weichai Power, founded in 1946, is the cornerstone of Weichai Holding Group, which is the world-leading provider of diesel, gas, and alternative fuel engines. The product series covers high-speed engine from 25kW to 2,941kW and medium-speed engine from 220kW to 4,500kW, with the production capacity up to 1,000,000 units per year. Meanwhile, a complete series of Gen-sets with the power range from 12kW to 4,000kW are designed and produced in Weichai Power Generation Company, a wholly subsidiary owned by Weichai Power.

Our engine products are widely applied on trucks, buses, power generation, power plant, marine, agriculture, construction equipment, etc, pushing the world and life safer, faster, easier, clearer and healthier.

## COMPETENCE IN ENGINEERING

Backed by our rigorous development process, the engines are designed fundamentally focusing on the concept of environment, efficiency, reliability and durability. Our complete engine portfolios are ideal for cargo, construction dump and long-haul tractor. They can also be modified to customized variants for different truck applications.

Our state-of-the-art product benefits for you

- Power rating P1, P2 for heavy duty application
- Power rating P3, P4, P5 for high performance application
- Extended maintenance intervals
- Highest fuel efficiency
- Integrated system solution



## TABLE OF CONTENTS

Rating Guidelines	6
Exhaust Emission Regulations	8
Classification Approvals	10
Common Conversions	11
Product Portfolio	12
Propulsion Engines	24
Auxiliary Engines	65
Generator Sets	90
Propulsion System Solutions	104

## Rating Guidelines

Power definition (Standard ISO3046/1–Units are metric)

### Reference conditions

Ambient temperature 25 °C / 77 °F

Barometric pressure 100 kPa

Relative humidity 30%

Raw water temperature 25 °C / 77 °F

### Fuel oil

Relative density 0,840 ± 0,005

Lower calorific power 42 700 kJ/kg

Consumption tolerances 0 ± 5%

Inlet limit temperature 35 °C / 95 °F

**Our ratings also comply with classification societies maximum temperature definition without power derating.**

Ambient temperature 45 °C / 113 °F

Raw water temperature 32 °C / 90 °F

## Rating Guidelines

Marine Propulsion Power Rating

Power Classification	Typical Conditions of Usage	Typical Applications
P1 Continuous Duty	<ol style="list-style-type: none"> <li>1. Typical annual usage is recommended but not limited to 5000h–8000h;</li> <li>2. Full power can be used without interrupt;</li> <li>3. Average load: 70%–100% of rated power;</li> <li>4. The operating state in common use: Uninterrupted continuous high load use.</li> </ol>	Ocean vessel- Engineering vessel
P2 Heavy Duty	<ol style="list-style-type: none"> <li>1. Typical annual usage is recommended but not limited to 5000h;</li> <li>2. Full power could be utilized max 8h per 12h;</li> <li>3. Average load: 40%–80% of rated power;</li> <li>4. The operating state in common use: Continuous variable load, common use operating state is high load in high speed and middle speed.</li> </ol>	Ferries- High speed passengers boats- Trawlers- Inland waterway transport boats- Tugboat, offshore trade vessel- Purse seine vessel
P3 Intermittent Duty	<ol style="list-style-type: none"> <li>1. Typical annual usage is recommended but not limited to 3000h;</li> <li>2. Full power could be utilized max 4h per 12h;</li> <li>3. Average load: 40%–80% of rated power;</li> <li>4. The operating state in common use: high load in high speed and variable load in low speed.</li> </ol>	Offshore service boats- Seasonal cruise ship- Official vessels with high utilization rate
P4 Light duty	<ol style="list-style-type: none"> <li>1. Typical annual usage is recommended but not limited to 1000h;</li> <li>2. Full power could be utilized max 2h per 8h;</li> <li>3. Average load: 70%-90% of rated power;</li> <li>4. The operating state in common use: high load in high speed and low load in low speed, Have higher requirement to acceleration.</li> </ol>	Fishery patrol ship- Maritime surveillance ship- Patrol boat- Life boat- Stormships used by local governments
P5 High Performance Duty	<ol style="list-style-type: none"> <li>1. Typical annual usage is recommended but not limited to 500h;</li> <li>2. Full power could be utilized max 0.5h per 5h;</li> <li>3. Average load: 60% of rated power;</li> <li>4. The operating state in common use: high load in high speed and low load in low speed, Have higher requirement to acceleration.</li> </ol>	Leisure yachts

# Rating Guidelines

## Diesel Engine for Marine Generator and Emergency Generator Power Rating

Power rating	Working Condition	Typical Application
COP Continuous Power	Unlimited running time per year. Can running continuously at full load. Have the capacity of 10% overload.	Light seine vessel, fish freezing vessel
PRP Prime Power	Unlimited running time per year. The average load factor is no more than 70% over 24 hours. Can running at 10% overload for 1h per 12h.	Main generator set, parking generator set, emergency generator set

# Exhaust Emission Regulations

## IMO

kW	HP	2017	2018	2019	2020	2021	2022
>130	>174	Tier II (Tier III within a NOx ECA)					

**IMO:** The International Maritime Organization (IMO) regulates exhaust emissions on diesel engines above 130 kW (174hp); engines used exclusively in emergency applications are exempt. Currently at IMO Tier II, however IMO Tier III applies for certain vessels when operating within a NOx Emission Control Area. These include the North American ECA and U.S. Caribbean Sea ECA (effective Jan 1, 2016), and the North Sea ECA and Baltic Sea ECA (effective Jan 1, 2021).

## EPA

kW	HP	2017	2018	2019	2020	2021	2022
<600	<805	Tier 3					
≥600	≥805	Tier 4					

**EPA:** The United States Environmental Protection Agency (EPA) regulates exhaust emissions from diesel engines installed on U.S. flagged/registered marine vessels.

## EU

kW	HP	2017	2018	2019	2020	2021	2022
19-299	25-401	Stg IIIa		Stg V			
>299	>401	Stg IIIa			Stg V		
Recreational Propulsion		RCD 2					

**EU:** The Non road Mobile Machinery Directive regulates exhaust emissions from diesel engines installed on inland waterway vessels operating in the European Union. The Recreational Craft Directive regulates noise and exhaust emissions from propulsion engines installed on recreational craft operating in the European Union.



## Classification Approvals

WEICHAH engines are delivered tested and ready for installation on board. We are cooperating with the following major classification societies:



For availability and more information on marine classification society certification, please contact your local distributor.

## Common Conversions

### Power

1 kW=1.36 metric Ps

1 kW=1.341 BHP

1 BHP= 1.014 metric Ps

### Torque

1 Nm=0.102 mkg

1 Nm=0.74 lb ft

Nm=kW\*9549/rpm

### Specific fuel oil consumption (SFOC)

SFOC (g/kWh)=L/hr\*840/kW

### Length

1 cm=0.3937 in

1 m=3.28 ft

1 naut.mile= 1.853 km

1 mile=1.609 km

### Pressure

1 mm Hg=1.333 mbar

1 mm H<sub>2</sub>O=0.981 mbar

1 mbar= 100 Pa

1 bar=14.50 psi

### Mass

1 g=0.035 oz

1 kg=2.2 lb

1 metric ton= 1.1 short ton

### Volume

1 L=0.26 gallon (US)

1 L=0.21 gallon (UK)

1 L=61.02 in<sup>3</sup>

### Temperature

$T_c = (T_f - 32) / 1.8$

## Glossary

NA:Naturally aspiration

T:Turbocharged

TA:Turbocharged and aftercooled

Mechanical:Mechanical fuel injection pump

CR:Common Rail

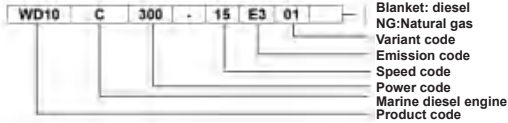
MG:Main Generator

EG:Emergency Generator

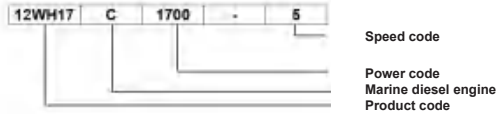
NR:Not regulated(According to Annex VI of MARPOL 73/78 Convention, there are no emission requirements for diesel engines with power less than 130kw and emergency diesel engines.)

## Product Model

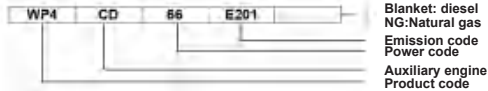
### High Speed Diesel Engine



### Medium Speed Diesel Engine



### Auxiliary Engine



### Generator Set



## Product Portfolio

### Propulsion-Diesel (Mechanical)

Ps	kW	rpm	Model	Rating	Emission	Page
54	40	1500	WP4.1C54-15	P1	NR	40
68	50	1500	WP4.1C68-15	P1	NR	
82	60	1800	WP4.1C82-18	P1	NR	
82	60	1500	WP4C82-15	P1	NR	41
95	70	1800	WP4C95-18	P1	NR	
102	75	1500	WP4C102-15	P1	NR	
102	75	2100	WP4C102-21	P1	NR	
120	88	1800	WP4C120-18	P1	NR	
130	95	2100	WP4C130-21	P1	NR	
140	103	2300	WP6C140-23	P1	NR	42
142	105	1800	WP6C142-18	P1	NR	
150	110	1500	WP6C150-15	P1	NR	
156	115	2100	WP6C156-21	P1	NR	
163	120	2300	WP6C163-23	P1	NR	
165	122	1800	WP6C165-18	P1	NR	
185	136	2100	WP6C185-21	P1	IMO II	
220	162	2300	WP6C220-23	P1	IMO II	
228	168	2230	WP6C250-23	P3	IMO II	
190	140	1500	WD10C190-15	P1	IMO II	
200	147	2100	WD10C200-21	P1	IMO II	
218	160	1500	WD10C218-15	P1	IMO II	
240	176	1500	WD10C240-15	P1	IMO II	
240	176	1800	WD10C240-18	P1	IMO II	
278	205	1500	WD10C278-15	P1	IMO II	
278	205	1800	WD10C278-18	P1	IMO II	
278	205	2100	WD10C278-21	P1	IMO II	
300	220	2100	WD10C300-21	P1	IMO II	
312	230	1800	WD10C312-18	P1	IMO II	
326	240	2100	WD10C326-21	P1	IMO II	
300	220	1500	WD12C300-15	P1	IMO II	
327	240	1500	WD12C327-15	P1	IMO II	
350	258	1800	WD12C350-18	P1	IMO II	
375	275	2150	WD12C375-21	P1	IMO II	
400	294	2150	WD12C400-21	P1	IMO II	
400	295	1800	WP12C400-18	P1	IMO II	45
450	330	2100	WP12C450-21	P1	IMO II	
450	330	1800	WP13C450-18	P1	IMO II	46
482	354	1800	WP13C482-18	P1	IMO II	
500	368	1800	WP13C500-18	P1	IMO II	



## Product Portfolio

### Propulsion-Diesel (Mechanical)

Ps	kW	rpm	Model	Rating	Emission	Page	
550	404	1500	6M33C550-15	P1	IMO II	47	
600	441	1800	6M33C600-18	P1	IMO II		
650	478	1800	6M33C650-18	P1	IMO II		
700	515	1800	6M33C700-18	P1	IMO II		
750	551	1800	6M33C750-18	P2	IMO II		
1000	735	1500	12M33C1000-15	P1	IMO II	48	
1200	882	1800	12M33C1200-18	P1	IMO II		
1300	956	1800	12M33C1300-18	P1	IMO II		
1400	1029	1800	12M33C1400-18	P1	IMO II		
1500	1103	1800	12M33C1500-18	P2	IMO II		
350	258	1000	X6170ZC350-1	P1	IMO II	49	
408	300	1000	X6170ZC408-1	P1	IMO II		
450	330	1000	X6170ZC450-1	P1	IMO II		
480	353	1200	X6170ZC480-2	P1	IMO II		
540	397	1200	X6170ZC540-2	P1	IMO II		
580	426	1350	X6170ZC580-3	P1	IMO II		
620	456	1200	X6170ZC620-2	P1	IMO II		
620	456	1500	X6170ZC620-5	P1	IMO II		
650	478	1200	X6170ZC650-2	P1	IMO II		
680	500	1350	X6170ZC680-3	P1	IMO II		
756	556	1500	X6170ZC756-5	P1	IMO II		
818	601	1500	X6170ZC818-5	P1	IMO II		
835	614	1548	X6170ZC835-5	P2	IMO II		
600	441	1000	8170ZC600-1	P1	IMO II		50
720	530	1200	8170ZC720-2	P1	IMO II		
818	601	1350	8170ZC818-3	P1	IMO II		
830	610	1200	8170ZC830-2	P1	IMO II		
900	661	1350	8170ZC900-3	P1	IMO II		
900	661	1500	8170ZC900-5	P1	IMO II		
1000	735	1500	8170ZC1000-5	P1	IMO II		
612	450	750	CW6200ZC-7	P1	IMO II	51	
816	600	1000	CW6200ZC	P1	IMO II		
950	698	1000	XCW6200ZC	P1	IMO II		
1102	810	1000	XCW6200ZC-10	P1	IMO II	52	
1263	928	1000	XCW8200ZC	P1	IMO II		
1400	1030	1000	XCW8200ZC-10	P1	IMO II		

## Product Portfolio

### Propulsion-Diesel (Mechanical)

Ps	kW	rpm	Model	Rating	Emission	Page
1633	1200	1000	CW12V200ZC	P1	IMO II	53
1960	1440	1000	XCW12V200ZC-1	P1	IMO II	
2177	1600	1000	CW16V200ZC-6	P1	IMO II	54
2395	1760	1000	CW16V200ZC	P1	IMO II	
1500	1103	750	CW6250ZLC-1	P1	IMO II	55
1800	1323	900	CW6250ZLC-2	P1	IMO II	
2000	1470	1000	CW6250ZLC	P1	IMO II	
2000	1470	750	CW8250ZLC-1	P1	IMO II	56
2395	1760	900	CW8250ZLC-2	P1	IMO II	
2667	1960	1000	CW8250ZLC	P1	IMO II	
1230	905	1000	6WH20LC1230-1	P1	IMO II	57
1360	1000	1000	6WH20LC1360-1	P1	IMO II	
1520	1118	1000	6WH20LC1520-1	P1	IMO II	
1632	1200	1000	6WH20LC1632-1	P1	IMO II	58
2000	1470	1000	8WH20LC2000-1	P1	IMO II	
2176	1600	1000	8WH20LC2176-1	P1	IMO II	
2000	1470	750	6WH25LC2000-7.5	P1	IMO II	59
2000	1470	1000	6WH25LC2000-1	P1	IMO II	
2204	1620	900	6WH25LC2204-9	P1	IMO II	
2448	1800	1000	6WH25LC2448-1	P1	IMO II	60
2720	2000	750	8WH25LC2720-7.5	P1	IMO II	
3000	2207	900	8WH25LC3000-9	P1	IMO II	
3000	2205	1000	8WH25LC3000-1	P1	IMO II	61
3046	2240	750	6WH28C3046-7.5	P1	IMO II	
3264	2400	800	6WH28C3264-8	P1	IMO II	
4080	3000	750	8WH28C4080-7.5	P1	IMO II	62
4352	3200	800	8WH28C4352-8	P1	IMO II	
4080	3000	750	6WH32C4080-7.5	P1	IMO II	63
5440	4000	750	8WH32C5440-7.5	P1	IMO II	
6120	4500	750	9WH32C6120-7.5	P1	IMO II	

## Product Portfolio

Propulsion-Diesel (ECU Control Diesel Engine)

Ps	kW	rpm	Model	Rating	Emission	Page
34	25	1500	WP3.2C34-15E321	P1	NR	64
37	27	1800	WP3.2C37-18E321	P1	NR	
41	30	1500	WP3.2C41-15E321	P1	NR	
50	37	2400	WP3.2C50-24E321	P1	NR	
54	40	1800	WP2.3NC54-18E220	P1	NR	65
68	50	1800	WP2.3NC68-18E220	P1	NR	
82	60	1800	WP2.3NC82-18E220	P1	NR	
88	65	3200	WP2.3NC88-32E220	P1	NR	
102	75	2100	WP2.3NC102-21E220	P1	NR	66
102	75	3200	WP2.3NC102-32E220	P3	NR	
110	81	2500	WP2.3NC110-25E220	P1	NR	
115	85	3200	WP2.3NC115-32E220	P3	NR	
130	95	3200	WP2.3NC130-32E220	P3	NR	67
115	85	3000	WP3NC115-30E220	P3	NR	
130	95	3000	WP3NC130-30E220	P3	NR	
150	110	3000	WP3NC150-30E220	P3	NR	
160	118	3000	WP3NC160-30E220	P3	NR	68
120	88	1800	WP4.1NC120-18E220	P1	NR	
130	95	2100	WP4.1NC130-21E220	P1	NR	
142	105	1800	WP4.1NC142-18E220	P1	NR	
163	120	2100	WP4.1NC163-21E220	P1	NR	69
190	140	2600	WP4.1NC190-26E220	P3	IMO II	
150	110	1500	WP7C150-15E120	P1	NR	
240	176	1800	WP7C240-18E120	P1	IMO II	
268	197	1800	WP7C268-18E120	P1	IMO II	70
278	205	2100	WP7C278-21E120	P1	IMO II	
300	220	2250	WP7C300-22.5E120	P2	IMO II	
313	230	2130	WP10C313-21	P1	IMO II	
350	257	1800	WP10C350-18	P1	IMO II	71
375	275	2100	WP10C375-21	P2	IMO II	
395	290	2200	WP10C395-22	P3	IMO II	
500	368	2100	WP12C500-21E121	P2	IMO II	
550	405	2100	WP12C550-21E121	P3	IMO II	72
500	368	1800	WP13C500-18E121	P1	IMO II	
550	405	1800	WP13C550-18E121	P3	IMO II	
550	405	2100	WP13C550-21E121	P3	IMO II	
550	405	1800	WP13Y550-18E220	P2	IMO II	73
600	441	2100	WP13Y600-21E220	P3	IMO II	
550	405	1800	WP17TC550-18E220*	P1	IMO II	
600	441	1800	WP17TC600-18E220*	P1	IMO II	
650	478	1800	WP17TC650-18E220*	P1	IMO II	74
760	559	1800	WP17TC760-18E220*	P1	IMO II	
800	588	1800	WP17TC800-18E220*	P1	IMO II	
815	599	2300	6M21Y815-23E200	P3	IMO II	
900	662	2300	6M21Y900-23E200	P4	IMO II	75
1000	735	2300	6M21Y1000-23E200	P5	IMO II	
1000	735	2300	8M21Y1000-23E200	P3	IMO II	
1100	809	2300	8M21Y1100-23E200	P3	IMO II	
1250	919	2300	8M21Y1250-23E200	P4	IMO II	76
1360	1000	2300	8M21Y1360-23E200	P5	IMO II	
750	552	1800	6M33C750-18E211	P1	IMO II	
830	610	1800	6M33C830-18E211	P2	IMO II	
912	670	1900	6M33C912-19E211	P3	IMO II	77
1020	750	2000	6M33C1020-20E211	P4	IMO II	
1400	1030	1800	12M33C1400-18E211	P1	IMO II	
1500	1104	1800	12M33C1500-18E211	P2	IMO II	
1650	1214	1800	12M33C1650-18E211	P3	IMO II	78
1750	1287	1600	16M33C1750-16E211	P1	IMO II	
1850	1361	1600	16M33C1850-16E211	P2	IMO II	
1950	1434	1800	16M33C1950-18E211	P1	IMO II	
2100	1545	1800	16M33C2100-18E211	P2	IMO II	79
2450	1800	1600	12M55C2450-16E200	P1	IMO II	
2700	1985	1600	12M55C2700-16E200	P2	IMO II	
2250	1654	1800	12M55C2250-18E201	P1	IMO II	
2450	1800	1800	12M55C2450-18E201	P1	IMO II	80
2600	1912	1800	12M55C2600-18E201	P1	IMO II	
2738	2013	1800	12M55C2738-18E201	P1	IMO II	
3000	2205	1800	12M55C3000-18E201	P2	IMO II	
3450	2536	1800	12M55C3450-18E201	P3	IMO II	81
2800	2060	1500	16M55C2800-15E210	P1	IMO II	
3000	2205	1500	16M55C3000-15E210	P1	IMO II	
3400	2500	1500	16M55C3400-15E210	P1	IMO II	
3128	4000	1800	16M55C3128-18E211	P1	IMO II	82
3400	2500	1800	16M55C3400-18E211	P1	IMO II	
3810	2800	1800	16M55C3810-18E211	P1	IMO II	
4000	2941	1800	16M55C4000-18E211	P2	IMO II	

## Product Portfolio

Propulsion-Diesel (ECU Control Diesel Engine)

Ps	kW	rpm	Model	Rating	Emission	Page
550	405	1800	WP17TC550-18E220*	P1	IMO II	72
600	441	1800	WP17TC600-18E220*	P1	IMO II	
650	478	1800	WP17TC650-18E220*	P1	IMO II	
760	559	1800	WP17TC760-18E220*	P1	IMO II	
800	588	1800	WP17TC800-18E220*	P1	IMO II	73
815	599	2300	6M21Y815-23E200	P3	IMO II	
900	662	2300	6M21Y900-23E200	P4	IMO II	
1000	735	2300	6M21Y1000-23E200	P5	IMO II	
1000	735	2300	8M21Y1000-23E200	P3	IMO II	74
1100	809	2300	8M21Y1100-23E200	P3	IMO II	
1250	919	2300	8M21Y1250-23E200	P4	IMO II	
1360	1000	2300	8M21Y1360-23E200	P5	IMO II	
750	552	1800	6M33C750-18E211	P1	IMO II	75
830	610	1800	6M33C830-18E211	P2	IMO II	
912	670	1900	6M33C912-19E211	P3	IMO II	
1020	750	2000	6M33C1020-20E211	P4	IMO II	
1400	1030	1800	12M33C1400-18E211	P1	IMO II	76
1500	1104	1800	12M33C1500-18E211	P2	IMO II	
1650	1214	1800	12M33C1650-18E211	P3	IMO II	
1750	1287	1600	16M33C1750-16E211	P1	IMO II	
1850	1361	1600	16M33C1850-16E211	P2	IMO II	77
1950	1434	1800	16M33C1950-18E211	P1	IMO II	
2100	1545	1800	16M33C2100-18E211	P2	IMO II	
2450	1800	1600	12M55C2450-16E200	P1	IMO II	
2700	1985	1600	12M55C2700-16E200	P2	IMO II	78
2250	1654	1800	12M55C2250-18E201	P1	IMO II	
2450	1800	1800	12M55C2450-18E201	P1	IMO II	
2600	1912	1800	12M55C2600-18E201	P1	IMO II	
2738	2013	1800	12M55C2738-18E201	P1	IMO II	79
3000	2205	1800	12M55C3000-18E201	P2	IMO II	
3450	2536	1800	12M55C3450-18E201	P3	IMO II	
2800	2060	1500	16M55C2800-15E210	P1	IMO II	
3000	2205	1500	16M55C3000-15E210	P1	IMO II	80
3400	2500	1500	16M55C3400-15E210	P1	IMO II	
3128	4000	1800	16M55C3128-18E211	P1	IMO II	
3400	2500	1800	16M55C3400-18E211	P1	IMO II	
3810	2800	1800	16M55C3810-18E211	P1	IMO II	81
4000	2941	1800	16M55C4000-18E211	P2	IMO II	

## Product Portfolio

Propulsion-Diesel (ECU Control Diesel Engine)

Ps	kW	rpm	Model	Rating	Emission	Page
350	258	1000	X6170ZC350-1	P1	IMO II	
408	300	1000	X6170ZC408-1	P1	IMO II	
450	330	1000	X6170ZC450-1	P1	IMO II	
480	353	1200	X6170ZC480-2	P1	IMO II	
540	397	1200	X6170ZC540-1*	P1	IMO II	
540	397	1200	X6170ZC540-2	P1	IMO II	
580	426	1350	X6170ZC580-3	P1	IMO II	80
620	456	1200	X6170ZC620-2	P1	IMO II	
620	456	1500	X6170ZC620-5	P1	IMO II	
650	478	1200	X6170ZC650-2	P1	IMO II	
680	500	1350	X6170ZC680-3	P1	IMO II	
756	556	1500	X6170ZC756-5	P1	IMO II	
818	601	1500	X6170ZC818-5	P1	IMO II	
835	614	1548	X6170ZC835-5	P2	IMO II	
600	441	1000	8170ZC600-1	P1	IMO II	
720	530	1200	8170ZC720-2	P1	IMO II	
818	601	1350	8170ZC818-3	P1	IMO II	81
900	661	1350	8170ZC900-3	P1	IMO II	
900	661	1500	8170ZC900-5	P1	IMO II	
1000	735	1500	8170ZC1000-5	P1	IMO II	

## Product Portfolio

Propulsion-Diesel (ECU Control Diesel Engine)

Ps	kW	rpm	Model	Rating	Emission	Page
650	478	1000	6WH17C650-1	P1	IMO II	
680	500	1200	6WH17C680-2	P1	IMO II	
700	515	1000	6WH17C700-1	P1	IMO II	
750	551	1200	6WH17C750-2	P1	IMO II	82
850	625	1200	6WH17C850-2	P1	IMO II	
900	661	1350	6WH17C900-3	P1	IMO II	
900	661	1500	6WH17C900-5	P1	IMO II	
1000	735	1500	6WH17C1000-5	P1	IMO II	
900	662	1000	8WH17C900-1	P1	IMO II	
952	700	1000	8WH17C952-1	P1	IMO II	
1000	735	1200	8WH17C1000-2	P1	IMO II	
1156	850	1200	8WH17C1156-2	P1	IMO II	83
1200	882	1350	8WH17C1200-3	P1	IMO II	
1251	920	1500	8WH17C1251-5	P1	IMO II	
1360	1000	1500	8WH17C1360-5	P1	IMO II	
1224	900	1200	12WH17C1224-2	P1	IMO II	
1360	1000	1200	12WH17C1360-2	P1	IMO II	
1496	1100	1200	12WH17C1496-2	P1	IMO II	
1632	1200	1200	12WH17C1632-2	P1	IMO II	84
1700	1250	1500	12WH17C1700-5	P1	IMO II	
1836	1350	1500	12WH17C1836-5*	P1	IMO II	
1972	1450	1500	12WH17C1972-5*	P1	IMO II	

## Product Portfolio

### Propulsion-Gas(ECU Control Gas Engine)

Ps	kW	rpm	Model	Rating	Emission	Page
450	330	1500	6M33C450-15E220NG	P1	IMO II	86
500	368	1500	6M33C500-15E220NG	P1	IMO II	
500	368	1800	6M33C500-18E220NG	P1	IMO II	
550	405	1800	6M33C550-18E220NG	P1	IMO II	
571	420	1500	6M33C571-15E220NG	P1	IMO II	
612	450	1800	6M33C612-18E220NG	P1	IMO II	87
300	220	1000	X6170ZC300NG1	P1	IMO II	
350	258	1000	X6170ZC350NG1	P1	IMO II	
408	300	1200	X6170ZC408NG2	P1	IMO II	
450	330	1200	X6170ZC450NG2	P1	IMO II	
490	360	1200	X6170ZC490NG2	P1	IMO II	88
550	405	1350	X6170ZC550NG3	P1	IMO II	
612	450	1500	X6170ZC612NG5	P1	IMO II	
650	478	1200	8170ZC650NG2	P1	IMO II	
735	540	1350	8170ZC735NG3	P1	IMO II	
818	601	1500	8170ZC818NG5	P1	IMO II	89
900	661	1500	8170ZC900NG5	P1	IMO II	
1360	1000	1000	6WH20LC1360NG1A1	P1	IMO II	
1496	1100	1000	6WH20LC1496NG1A1	P1	IMO II	

## Product Portfolio

### Auxiliary Engines

Engine Power (kW)	Model	Genset Power (kW)	rpm	Emission	Page
23	WP2.3CD25E200	12/16	1500	NR	92
27	WP2.3CD30E201	20	1800	NR	
30	WP2.3CD33E200	20/24	1500	NR	
36	WP2.3CD40E200	30	1500	NR	
36	WP2.3CD40E201	30	1800	NR	
43	WP2.3CD48E201	30	1800	NR	93
40	WP2.3NCD44E220	30	1500	NR	
50	WP2.3NCD55E220	40	1500	NR	
60	WP2.3NCD66E220	50	1500	NR	
71	WP2.3NCD78E221	64	1800	NR	
25	WP3.2CD28E310	16/20	1500	NR	94
30	WP3.2CD33E311	20/24	1800	NR	
33	WP3.2CD36E310	24	1500	NR	
36.9	WP3.2CD41E311	30	1800	NR	
60	WP4.1CD66E200	40/50	1500	NR	
60	WP4.1CD66E201	40/50	1800	NR	95
75	WP4.1CD83E200	60/64	1500	NR	
75	WP4.1CD83E201	60/64	1800	NR	
85	WP4.1CD95E201	70	1800	NR	
75	WP4.1NCD83E220	64	1500	NR	
90	WP4.1NCD100E220	75	1500	NR	96
105	WP4.1NCD115E221	90	1800	NR	
60	WP4CD66E200	40/50	1500	NR	
60	WP4CD66E201	40/50	1800	NR	97
90	WP4CD100E200	64/75	1500	NR	
90	WP4CD100E201	64/75	1800	NR	
108	WP4CD118E201	90	1800	NR	

# Product Portfolio

## Auxiliary Engines

Engine Power (kW)	Model	Genset Power (kW)	rpm	Emission	Page	
120	WP6CD132E200	90/100	1500	NR	98	
120	WP6CD132E201	90/100	1800	NR		
120	WP6CD132E220	90/100	1500	NR		
120	WP6CD132E221	90/100	1800	NR		
138	WP6CD152E200	120	1500	IMO II		
144	WP6CD158E201	120	1800	IMO II		
138	WP6CD152E220	120	1500	IMO II		
144	WP6CD158E221	120	1800	IMO II		
182	WP10CD200E200	150	1500	IMO II	99	
182	WP10CD200E201	150	1800	IMO II		
182	WP10CD200E220	150	1500	IMO II		
182	WP10CD200E221	150	1800	IMO II		
216	WP10CD238E200	180	1500	IMO II		
216	WP10CD238E201	180	1800	IMO II		
216	WP10CD238E220	180	1500	IMO II		
216	WP10CD238E221	180	1800	IMO II		
240	WP10CD264E200	200	1500	IMO II	100	
240	WP10CD264E201	200	1800	IMO II		
240	WP10CD264E220	200	1500	IMO II		
240	WP10CD264E221	200	1800	IMO II		
288	WP12CD317E200	250	1500	IMO II		
288	WP12CD317E201	250	1800	IMO II		
290	WP13CD319E220	250	1500	IMO II		101
310	WP13CD340E220	280	1500	IMO II		
350	WP13CD385E200	300	1500	IMO II		
350	WP13CD385E201	300	1800	IMO II		
350	WP13CD385E220	300	1500	IMO II		
350	WP13CD385E221	300	1800	IMO II		

# Product Portfolio

## Auxiliary Engines

Engine Power (kW)	Model	Genset Power (kW)	rpm	Emission	Page	
440	WP17TCD484E220*	400	1800	IMO II	102	
480	WP17TCD528E220*	450	1800	IMO II		
406	6M33CD447E200	360	1500	IMO II	103	
406	6M33CD447E201	360	1800	IMO II		
406	6M33CD447E210	360	1500	IMO II		
440	6M33CD484E200	400	1500	IMO II		
440	6M33CD484E201	400	1800	IMO II		
440	6M33CD484E210	400	1800	IMO II		
500	6M33CD550E200	450	1500	IMO II		
500	6M33CD550E210	450	1500	IMO II		
523	6M33CD575E201	450	1800	IMO II		
550	6M33CD605E200	500	1500	IMO II		
550	6M33CD605E201	500	1800	IMO II		
550	6M33CD605E210	500	1500	IMO II		
552	6M33CD607E201	500	1800	IMO II		
575	6M33CD633E211	500	1800	IMO II		
580	12M33CD638E200	500	1500	IMO II		104
680	12M33CD748E200	600	1500	IMO II		
680	12M33CD748E201	600	1800	IMO II		
680	12M33CD748E210	500	1500	IMO II		
680	12M33CD748E211	600	1800	IMO II		
720	12M33CD792E200	630	1500	IMO II		
780	12M33CD858E210	700	1500	IMO II		
820	12M33CD902E200	700	1500	IMO II		
820	12M33CD902E201	700	1800	IMO II		
880	12M33CD968E200	800	1500	IMO II		
880	12M33CD968E201	800	1800	IMO II		

## Product Portfolio

### Auxiliary Engines

Engine Power (kW)	Model	Genset Power (kW)	rpm	Emission	Page
880	12M33CD968E210	800	1500	IMO II	104
1000	12M33CD1100E200	900	1500	IMO II	
1000	12M33CD1100E201	900	1800	IMO II	
1000	12M33CD1100E210	900	1500	IMO II	
1045	12M33CD1150E201	900	1800	IMO II	
1100	12M33CD1210E200	1000	1500	IMO II	
1100	12M33CD1210E201	1000	1800	IMO II	
1104	12M33CD1214E211	1000	1800	IMO II	
1210	16M33CD1331E210	1100	1500	IMO II	105
1320	16M33CD1452E210	1200	1500	IMO II	
1320	16M33CD1452E211	1200	1800	IMO II	
1530	16M33CD1683E211	1400	1800	IMO II	
1529	12M55CD1682E210	1400	1500	IMO II	106
1641	12M55CD1805E210	1500	1500	IMO II	
1641	12M55CD1805E211	1500	1800	IMO II	
1760	12M55CD1936E210	1600	1500	IMO II	
1864	12M55CD2050E210	1700	1500	IMO II	
1985	12M55CD2184E210	1800	1500	IMO II	
1985	12M55CD2184E211	1800	1800	IMO II	
2200	12M55CD2420E211	2000	1800	IMO II	
280	X6170ZCD280-1	250	1000	IMO II	107
330	X6170ZCD330-1	300	1000	IMO II	
350	X6170ZCD350-2	300	1200	IMO II	
400	X6170ZCD400-1	350	1000	IMO II	
440	X6170ZCD440-1	400	1000	IMO II	
441	X6170ZCD441-2	400	1200	IMO II	
441	8170ZCD441-1	400	1000	IMO II	

## Product Portfolio

### Auxiliary Engines

Engine Power (kW)	Model	Genset Power (kW)	rpm	Emission	Page	
490	8170ZCD490-1	450	1000	IMO II	108	
570	8170ZCD570-1	500	1000	IMO II		
600	CW6200ZD	500	1000	IMO II	109	
698	XCW6200ZD	600	1000	IMO II		
810	XCW6200ZD-10	700	1000	IMO II		
1440	XCW12V200ZD-1	1250	1000	IMO II	110	
1760	CW16V200ZD	1500	1000	IMO II	111	
1470	CW6250ZLD	1250	1000	IMO II	112	
490	6WH17CD539-1	450	1000	IMO II	113	
580	6WH17CD638-2	500	1200	IMO II		
600	6WH17CD660-5	550	1500	IMO II		
735	6WH17CD809-5	600	1500	IMO II		
660	8WH17CD726-1*	600	1000	IMO II		114
700	8WH17CD770-1*	600	1000	IMO II		
780	8WH17CD858-2*	700	1200	IMO II		
980	8WH17CD1078-5*	850	1500	IMO II		
900	12WH17CD990-1	800	1000	IMO II	115	
1100	12WH17CD1210-2	1000	1200	IMO II		
1150	12WH17CD1265-5	1000	1500	IMO II		
1350	12WH17CD1485-5	1200	1500	IMO II		
1450	12WH17CD1595-5	1300	1500	IMO II		
700	6WH20LCD700-7.5*	600	750	IMO II		116
800	6WH20LCD800-7.2*	700	720	IMO II		
825	6WH20LCD825-7.5*	700	750	IMO II		
900	6WH20LCD900-7.5*	800	750	IMO II		
1000	6WH20LCD1000-9*	900	900	IMO II		
1000	6WH20LCD1000-1*	900	1000	IMO II		

# Product Portfolio

## Auxiliary Engines

Engine Power (kW)	Model	Genset Power (kW)	rpm	Emission	Page
1200	6WH20LCD1200-1*	1100	1000	IMO II	116
2040	6WH28CD2245-7.2*	1930	720	IMO II	
2040	6WH28CD2245-7.5*	1930	750	IMO II	
2240	6WH28CD2465-7.2*	2120	720	IMO II	117
2240	6WH28CD2465-7.5*	2120	750	IMO II	
2460	6WH28CD2706-7.5*	2330	750	IMO II	
2720	8WH28CD2992-7.2*	2580	720	IMO II	
2720	8WH28CD2992-7.5*	2580	750	IMO II	
3000	8WH28CD3300-7.2*	2850	720	IMO II	118
3000	8WH28CD3300-7.5*	2850	750	IMO II	
3160	8WH28CD3476-7.5*	3000	750	IMO II	
30	WP4CD30E200NG	24	1500	NR	119
35	WP4CD35E200NG	30	1500	NR	
60	WP6CD60E200NG	50	1500	NR	
90	WP6CD90E200NG	64/75	1500	NR	120
120	WP6CD120E200NG	90/100	1500	NR	
200	WP13CD220E220NG	150	1500	IMO II	
250	WP13CD275E220NG	200	1500	IMO II	121
250	WP13CD275E221NG	200	1800	IMO II	
300	6M33CD330E220NG	250	1500	IMO II	
350	6M33CD385E220NG	300	1500	IMO II	
400	6M33CD440E220NG	350	1500	IMO II	122
450	6M33CD495E221NG	400	1800	IMO II	

# Product Portfolio

## Generator Sets

Engine Series	Set Model	Frequency	rpm	KWe	Emission	Page
WP2.3	CCFJ12J-W#	50	1500	12	NR	
	CCFJ16J-W#	50	1500	16	NR	
	CCFJ20J-W#	50	1500	20	NR	
	CCFJ24J-W#	50	1500	24	NR	125
	CCFJ30J-W#	50	1500	30	NR	
	CCFJ20J-W#	60	1800	20	NR	
WP3.2	CCFJ30J-W#	60	1800	30	NR	
	CCFJ16J-W#	50	1500	16	NR	
	CCFJ20J-W#	50	1500	20	NR	
	CCFJ24J-W#	50	1500	24	NR	125
	CCFJ20J-W#	60	1800	20	NR	
	CCFJ24J-W#	60	1800	24	NR	
WP2.3N	CCFJ30J-W#	60	1800	30	NR	
	CCFJ30J-W#	50	1500	30	NR	
	CCFJ40J-W#	50	1500	40	NR	125
WP4.1	CCFJ50J-W#	50	1500	50	NR	
	CCFJ64J-W#	60	1800	64	NR	
	CCFJ40J-W#	50	1500	40	NR	
	CCFJ50J-W#	50	1500	50	NR	
	CCFJ60J-W#	50	1500	60	NR	
	CCFJ64J-W#	50	1500	64	NR	125
WP4.1N	CCFJ40J-W#	60	1800	40	NR	
	CCFJ50J-W#	60	1800	50	NR	
	CCFJ60J-W#	60	1800	60	NR	
WP4	CCFJ64J-W#	60	1800	64	NR	
	CCFJ70J-W#	60	1800	70	NR	
	CCFJ64J-W#	50	1500	64	NR	
WP4.1N	CCFJ75J-W#	50	1500	75	NR	125
	CCFJ90J-W#	60	1800	90	NR	
WP4	CCFJ40J-W#	50	1500	40	IMO II	127

# Product Portfolio

## Generator Sets

Engine Series	Set Model	Frequency	rpm	KWe	Emission	Page
WP4	CCFJ50J-W#	50	1500	50	NR	127
	CCFJ64J-W#	50	1500	64	NR	
	CCFJ75J-W#	50	1500	75	NR	
	CCFJ40J-W#	60	1800	40	NR	
	CCFJ50J-W#	60	1800	50	NR	
	CCFJ64J-W#	60	1800	64	NR	
	CCFJ75J-W#	60	1800	75	NR	
	CCFJ90J-W#	60	1800	90	NR	
WP6	CCFJ90J-W#	50	1500	90	NR	128
	CCFJ100J-W#	50	1500	100	NR	
	CCFJ120J-W#	50	1500	120	IMO II	
	CCFJ100J-W#	60	1800	100	IMO II	
	CCFJ120J-W#	60	1800	120	IMO II	
WP10	CCFJ150J-W#	50	1500	150	IMO II	129
	CCFJ180J-W#	50	1500	180	IMO II	
	CCFJ200J-W#	50	1500	200	IMO II	
	CCFJ150J-W#	60	1800	150	IMO II	
	CCFJ180J-W#	60	1800	180	IMO II	
	CCFJ200J-W#	60	1800	200	IMO II	
WD12	CCFJ250J-W#	50	1500	250	IMO II	130
	CCFJ250J-W#	60	1800	250	IMO II	
WP13	CCFJ250J-W#	50	1500	250	IMO II	131
	CCFJ280J-W#	50	1500	280	IMO II	
	CCFJ300J-W#	50	1500	300	IMO II	
	CCFJ300J-W#	60	1800	300	IMO II	
6M33	CCFJ360J-W#	50	1500	360	IMO II	132
	CCFJ400J-W#	50	1500	400	IMO II	
	CCFJ450J-W#	50	1500	450	IMO II	
	CCFJ500J-W#	50	1500	500	IMO II	
	CCFJ360J-W#	60	1800	360	IMO II	

# Product Portfolio

## Generator Sets

Engine Series	Set Model	Frequency	rpm	KWe	Emission	Page
6M33	CCFJ400J-W#	60	1800	400	IMO II	132
	CCFJ450J-W#	60	1800	450	IMO II	
	CCFJ500J-W#	60	1800	500	IMO II	
	CCFJ500J-W#	50	1500	500	IMO II	
	CCFJ600J-W#	50	1500	600	IMO II	
	CCFJ700J-W#	50	1500	700	IMO II	
12M33	CCFJ800J-W#	50	1500	800	IMO II	133
	CCFJ900J-W#	50	1500	900	IMO II	
	CCFJ1000J-W#	50	1500	1000	IMO II	
	CCFJ500J-W#	60	1800	500	IMO II	
	CCFJ600J-W#	60	1800	600	IMO II	
	CCFJ700J-W#	60	1800	700	IMO II	
16M33	CCFJ800J-W#	60	1800	800	IMO II	134
	CCFJ900J-W#	60	1800	900	IMO II	
	CCFJ1000J-W#	60	1800	1000	IMO II	
	CCFJ1100J-W#	50	1500	1100	IMO II	
	CCFJ1200J-W#	50	1500	1200	IMO II	
	CCFJ1200J-W#	60	1800	1200	IMO II	
12M55	CCFJ1400J-W#	60	1800	1400	IMO II	135
	CCFJ1400J-W#	50	1500	1400	IMO II	
	CCFJ1500J-W#	50	1500	1500	IMO II	
	CCFJ1600J-W#	50	1500	1600	IMO II	
	CCFJ1700J-W#	50	1500	1700	IMO II	
	CCFJ1800J-W#	50	1500	1800	IMO II	
6170	CCFJ1500J-W#	60	1800	1500	IMO II	136
	CCFJ1800J-W#	60	1800	1800	IMO II	
	CCFJ2000J-W#	60	1800	2000	IMO II	
	CCFJ250J-W#	50	1000	250	IMO II	
	CCFJ300J-W#	50	1000	300	IMO II	
	CCFJ350J-W#	50	1000	350	IMO II	
	CCFJ400J-W#	50	1000	400	IMO II	
	CCFJ300J-W#	60	1200	300	IMO II	



## Product Portfolio

### Generator Sets

Engine Series	Set Model	Frequency	rpm	KWe	Emission	Page
6170	CCFJ400J-W#	60	1200	400	IMO II	136
	CCFJ400J-W#	50	1000	400	IMO II	
8170	CCFJ450J-W#	50	1000	450	IMO II	136
	CCFJ500J-W#	50	1000	500	IMO II	
CW6200	CCFJ500J-WM#	50	1000	500	IMO II	137
	CCFJ600J-WM#	50	1000	600	IMO II	
	CCFJ700J-WM#	50	1000	700	IMO II	
CW12V200	CCFJ1200J-WM#	50	1000	1200	IMO II	137
CW16V200	CCFJ1500J-WM#	50	1000	1500	IMO II	137
CW6250	CCFJ1200J-WM#	50	1000	1250	IMO II	137
	CCFJ450J-W#	50	1000	450	IMO II	
	CCFJ550J-W#	50	1500	550	IMO II	
	CCFJ600J-W#	50	1500	600	IMO II	
	CCFJ500J-W#	60	1200	500	IMO II	
6WH17	CCFJ600J-W#	50	1000	600	IMO II	138
	CCFJ850J-W#	50	1500	850	IMO II	
	CCFJ700J-W#	60	1200	700	IMO II	
8WH17	CCFJ800J-W#	50	1000	800	IMO II	138
	CCFJ1000J-W#	50	1500	1000	IMO II	
	CCFJ1200J-W#	50	1500	1200	IMO II	
	CCFJ1300J-W#	50	1500	1300	IMO II	
	CCFJ1000J-W#	60	1200	1000	IMO II	
12WH17	CCFJ600J-WM#	50	750	600	IMO II	138
	CCFJ700J-WM#	50	750	700	IMO II	
	CCFJ800J-WM#	50	750	800	IMO II	
	CCFJ900J-WM#	50	1000	900	IMO II	
	CCFJ1100J-WM#	50	1000	1100	IMO II	
	CCFJ700J-WM#	60	725	700	IMO II	
	CCFJ900J-WM#	60	900	900	IMO II	
6WH20	CCFJ1300J-WM#	50	750	1300	IMO II	139
	CCFJ1500J-WM#	50	1000	1500	IMO II	
6WH25	CCFJ1300J-WM#	50	750	1300	IMO II	140
	CCFJ1500J-WM#	50	1000	1500	IMO II	

## Product Portfolio

### Generator Sets

Engine Series	Set Model	Frequency	rpm	KWe	Emission	Page
6WH25	CCFJ1600J-WM#	50	1000	1600	IMO II	140
	CCFJ1800J-WM#	50	750	1800	IMO II	
8WH25	CCFJ1800J-WM#	50	1000	1800	IMO II	140
	CCFJ2000J-WM#	50	1000	2000	IMO II	
	CCFJ2200J-WM#	50	1000	2200	IMO II	
6WH28	CCFJ1930J-WM#	50	750	1930	IMO II	141
	CCFJ2120J-WM#	50	750	2120	IMO II	
	CCFJ2330J-WM#	50	750	2330	IMO II	
	CCFJ1930J-WM#	60	720	1930	IMO II	
8WH28	CCFJ2120J-WM#	60	720	2120	IMO II	141
	CCFJ2580J-WM#	50	750	2580	IMO II	
	CCFJ2850J-WM#	50	750	2850	IMO II	
	CCFJ3000J-WM#	50	750	3000	IMO II	
	CCFJ2580J-WM#	60	720	2580	IMO II	
	CCFJ2850J-WM#	60	720	2850	IMO II	

# Product Portfolio

## Emergency Generator Sets

Engine Series	Set Model	Frequency	rpm	KWe	Emission	Page
WP2.3	CCFJ12Y-W#	50	1500	12	NR	142
	CCFJ16Y-W#	50	1500	16	NR	
	CCFJ20Y-W#	50	1500	20	NR	
	CCFJ24Y-W#	50	1500	24	NR	
	CCFJ30Y-W#	50	1500	30	NR	
	CCFJ20Y-W#	60	1800	20	NR	
WP4	CCFJ30Y-W#	60	1800	30	NR	142
	CCFJ40Y-W#	50	1500	40	NR	
	CCFJ50Y-W#	50	1500	50	NR	
	CCFJ60Y-W#	50	1500	60	NR	
	CCFJ64Y-W#	50	1500	64	NR	
	CCFJ75Y-W#	50	1500	75	NR	
	CCFJ40Y-W#	60	1800	40	NR	
	CCFJ50Y-W#	60	1800	50	NR	
	CCFJ60Y-W#	60	1800	60	NR	
	CCFJ64Y-W#	60	1800	64	NR	
WP6	CCFJ75Y-W#	60	1800	75	NR	142
	CCFJ90Y-W#	60	1800	90	NR	
	CCFJ90Y-W#	50	1500	90	NR	
	CCFJ100Y-W#	50	1500	100	NR	
WD10	CCFJ120Y-W#	50	1500	120	NR	142
	CCFJ100Y-W#	60	1800	100	NR	
	CCFJ120Y-W#	60	1800	120	NR	
	CCFJ150Y-W#	50	1500	150	NR	
	CCFJ180Y-W#	50	1500	180	NR	
WD12	CCFJ200Y-W#	50	1500	200	NR	144
	CCFJ150Y-W#	60	1800	150	NR	
	CCFJ180Y-W#	60	1800	180	NR	
	CCFJ200Y-W#	60	1800	200	NR	
	CCFJ250Y-W#	50	1500	250	NR	
	CCFJ250Y-W#	60	1800	250	NR	

# Product Portfolio

## Emergency Generator Sets

Engine Series	Set Model	Frequency	rpm	KWe	Emission	Page
WP13	CCFJ300Y-W#	50	1500	300	NR	144
	CCFJ320Y-W#	50	1500	320	NR	
	CCFJ300Y-W#	60	1800	300	NR	
	CCFJ320Y-W#	60	1800	320	NR	
	CCFJ350Y-W#	50	1500	350	NR	
6M33	CCFJ400Y-W#	50	1500	400	NR	144
	CCFJ450Y-W#	50	1500	450	NR	
	CCFJ500Y-W#	50	1500	500	NR	
	CCFJ350Y-W#	60	1800	350	NR	
	CCFJ400Y-W#	60	1800	400	NR	
	CCFJ470Y-W#	60	1800	470	NR	
12M33	CCFJ500Y-W#	60	1800	500	NR	144
	CCFJ600Y-W#	50	1500	600	NR	
	CCFJ700Y-W#	50	1500	700	NR	
	CCFJ800Y-W#	50	1500	800	NR	
	CCFJ900Y-W#	50	1500	900	NR	
	CCFJ1000Y-W#	50	1500	1000	NR	
	CCFJ600Y-W#	60	1800	600	NR	
	CCFJ700Y-W#	60	1800	700	NR	
	CCFJ800Y-W#	60	1800	800	NR	
	CCFJ900Y-W#	60	1800	900	NR	
	CCFJ1000Y-W#	60	1800	1000	NR	

## Product Portfolio

### Gas Generator Sets

Engine Series	Set Model	Frequency	rpm	KWe	Emission	Page
WP4	CCFJ24J-W#	50	1500	24	NR	146
	CCFJ30J-W#	50	1500	30	NR	
WP6	CCFJ50J-W#	50	1500	50	NR	146
	CCFJ64J-W#	50	1500	64	NR	
	CCFJ75J-W#	50	1500	75	NR	
	CCFJ90J-W#	50	1500	90	NR	
WP13	CCFJ100J-W#	50	1500	100	NR	146
	CCFJ150J-W#	50	1500	150	IMO II	
	CCFJ200J-W#	50	1500	200	IMO II	
6M33	CCFJ200J-W#	60	1800	200	IMO II	146
	CCFJ250J-W#	50	1500	250	IMO II	
	CCFJ300J-W#	50	1500	300	IMO II	
	CCFJ350J-W#	50	1500	350	IMO II	
	CCFJ400J-W#	60	1800	400	IMO II	

## Product Portfolio

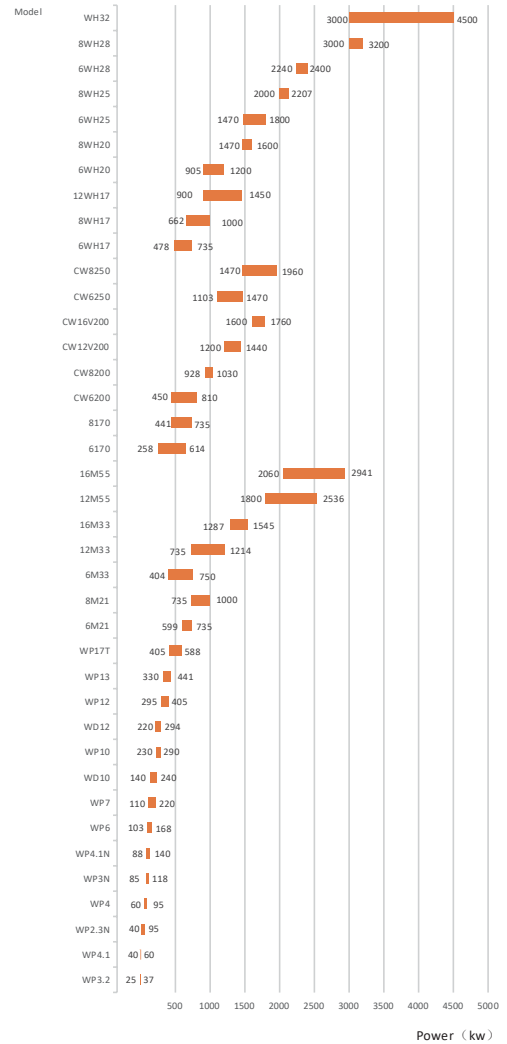
### Silent Generator Sets

Engine Series	Frequency	rpm	KWe	Emission	Page
WP2.3	50/60	1500/1800	12-30	NR	147
WP3.2	50/60	1500/1800	16-30	NR	
WP2.3N	50/60	1500/1800	30-64	NR	
WP4	50/60	1500/1800	40-90	NR	
WP4.1N	50/60	1500/1800	64-90	NR	
WP6	50/60	1500/1800	90-120	IMO II	
WP10	50/60	1500/1800	150-200	IMO II	
WP13	50/60	1500/1800	250-300	IMO II	



# PROPULSION ENGINES

- Genuine Marine Design
- Reliability in the most extreme conditions
- Design optimized for maintenance simplicity
- Best in Class fuel consumption and mean time between overhaul



## Propulsion Engines

# WP4.1



### General Specifications

<b>Configuration</b>	4 Cylinders, in line, 4-stroke diesel		
<b>Power Output Size</b>	SAE3/11.5"		
<b>Bore x Stroke</b>	4.13 x 4.65 in	105 x 118 mm	
<b>Displacement</b>	250 cu in	4.09L	
<b>Emission</b>	NR		

### Commercial Ratings

Model	Ps	kW	rpm	Aspiration	Fuel System	Rating
WP4.1C54-15	54	40	1500	T	Mechanical	P1
WP4.1C68-15	68	50	1500	T	Mechanical	P1
WP4.1C82-18	82	60	1800	T	Mechanical	P1

### Main Dimensions & Dry Weight

L(mm/in)	W(mm/in)	H(mm/in)	Dry Weight (kg/lbs)
1062/42	625/25	918/36	400/882

- Dimensions may vary based on selected engine configuration.
- The delivery date of model with\*should be negotiated specifically.

## Propulsion Engines

# WP4



### General Specifications

<b>Configuration</b>	4 Cylinders, in line, 4-stroke diesel		
<b>Power Output Size</b>	SAE1/14"		
<b>Bore x Stroke</b>	4.13 x 5.12 in	105 x 130 mm	
<b>Displacement</b>	275 cu in	4.5L	
<b>Emission</b>	NR		

### Commercial Ratings

Model	Ps	kW	rpm	Aspiration	Fuel System	Rating
WP4C82-15	82	60	1500	T	Mechanical	P1
WP4C95-18	95	70	1800	T	Mechanical	P1
WP4C102-15	102	75	1500	TA	Mechanical	P1
WP4C102-21	102	75	2100	T	Mechanical	P1
WP4C120-18	120	88	1800	TA	Mechanical	P1
WP4C130-21	130	95	2100	TA	Mechanical	P1

### Main Dimensions & Dry Weight

L(mm/in)	W(mm/in)	H(mm/in)	Dry Weight (kg/lbs)
1063/42	818/32	1056/42	600/1323

- Dimensions may vary based on selected engine configuration.
- The delivery date of model with\*should be negotiated specifically.

## Propulsion Engines

# WP6



### General Specifications

<b>Configuration</b>	6 Cylinders, in line, 4-stroke diesel
<b>Power Output Size</b>	SAE1/14"
<b>Bore x Stroke</b>	4.13 x 5.12 in 105 x 130 mm
<b>Displacement</b>	412 cu in 6.75L
<b>Emission</b>	IMO II

### Commercial Ratings

Model	Ps	kW	rpm	Aspiration	Fuel System	Rating
WP6C140-23	140	103	2300	TA	Mechanical	P1
WP6C142-18	142	105	1800	TA	Mechanical	P1
WP6C150-15	150	110	1500	TA	Mechanical	P1
WP6C156-21	156	115	2100	TA	Mechanical	P1
WP6C163-23	163	120	2300	TA	Mechanical	P1
WP6C165-18	165	122	1800	TA	Mechanical	P1
WP6C185-21	185	136	2100	TA	Mechanical	P1
WP6C220-23	220	162	2300	TA	Mechanical	P1
WP6C250-23	228	168	2230	TA	Mechanical	P3

### Main Dimensions & Dry Weight

L(mm/in)	W(mm/in)	H(mm/in)	Dry Weight (kg/lbs)
1366/54	904/36	1061/42	750/1653

- Dimensions may vary based on selected engine configuration.
- The delivery date of model with\*should be negotiated specifically.

## Propulsion Engines

# WD10



### General Specifications

<b>Configuration</b>	6 Cylinders, in line, 4-stroke diesel
<b>Power Output Size</b>	SAE1/14"
<b>Bore x Stroke</b>	4.96 x 5.12 in 126 x 130 mm
<b>Displacement</b>	594 cu in 9.726L
<b>Emission</b>	IMO II

### Commercial Ratings

Model	Ps	kW	rpm	Aspiration	Fuel System	Rating
WD10C190-15	190	140	1500	TA	Mechanical	P1
WD10C200-21	200	147	2100	T	Mechanical	P1
WD10C218-15	218	160	1500	TA	Mechanical	P1
WD10C240-15	240	176	1500	TA	Mechanical	P1
WD10C240-18	240	176	1800	TA	Mechanical	P1
WD10C278-15	278	205	1500	TA	Mechanical	P1
WD10C278-18	278	205	1800	TA	Mechanical	P1
WD10C278-21	278	205	2100	TA	Mechanical	P1
WD10C300-21	300	220	2100	TA	Mechanical	P1
WD10C312-18	312	230	1800	TA	Mechanical	P1
WD10C326-21	326	240	2100	TA	Mechanical	P1

### Main Dimensions & Dry Weight

Model	L(mm/in)	W(mm/in)	H(mm/in)	Dry Weight (kg/lbs)
WD10 (TA)	1895/75	948/37	1176/46	1056/2328
WD10 (T)	1695/67	948/37	1176/46	1018/2244

- Dimensions may vary based on selected engine configuration.
- The delivery date of model with\*should be negotiated specifically.

## Propulsion Engines

# WD12



### General Specifications

<b>Configuration</b>	6 Cylinders, in line, 4-stroke diesel		
<b>Power Output Size</b>	SAE1/14"		
<b>Bore x Stroke</b>	4.96 x 6.10 in	126 x 155 mm	
<b>Displacement</b>	708 cu in	11.596L	
<b>Emission</b>	IMO II		

### Commercial Ratings

Model	Ps	kW	rpm	Aspiration	Fuel System	Rating
WD12C300-15	300	220	1500	TA	Mechanical	P1
WD12C327-15	327	240	1500	TA	Mechanical	P1
WD12C350-18	350	258	1800	TA	Mechanical	P1
WD12C375-21	375	275	2150	TA	Mechanical	P1
WD12C400-21	400	294	2150	TA	Mechanical	P1

### Main Dimensions & Dry Weight

L(mm/in)	W(mm/in)	H(mm/in)	Dry Weight (kg/lbs)
1534/60	807/32	1512/60	1100/2425

- Dimensions may vary based on selected engine configuration.
- The delivery date of model with\*should be negotiated specifically.

## Propulsion Engines

# WP12



### General Specifications

<b>Configuration</b>	6 Cylinders, in line, 4-stroke diesel		
<b>Power Output Size</b>	SAE1/14"		
<b>Bore x Stroke</b>	4.96 x 6.10 in	126 x 155mm	
<b>Displacement</b>	708 cu in	11.596L	
<b>Emission</b>	IMO II		

### Commercial Ratings

Model	Ps	kW	rpm	Aspiration	Fuel System	Rating
WP12C400-18	400	295	1800	TA	Mechanical	P1
WP12C450-21	450	330	2100	TA	Mechanical	P1

### Main Dimensions & Dry Weight

L(mm/in)	W(mm/in)	H(mm/in)	Dry Weight (kg/lbs)
1695/67	858/34	1385/55	1200/2646

- Dimensions may vary based on selected engine configuration.
- The delivery date of model with\*should be negotiated specifically.

## Propulsion Engines

# WP13



### General Specifications

<b>Configuration</b>	6 Cylinders, in line, 4-stroke diesel		
<b>Power Output Size</b>	SAE1/14"		
<b>Bore x Stroke</b>	5.0 x 6.5 in	127 x 165 mm	
<b>Displacement</b>	765 cu in	12.54L	
<b>Emission</b>	IMO II		

### Commercial Ratings

Model	Ps	kW	rpm	Aspiration	Fuel System	Rating
WP13C450-18	450	330	1800	TA	Mechanical	P1
WP13C482-18	482	354	1800	TA	Mechanical	P1
WP13C500-18	500	368	1800	TA	Mechanical	P1

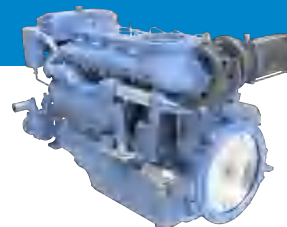
### Main Dimensions & Dry Weight

L(mm/in)	W(mm/in)	H(mm/in)	Dry Weight (kg/lbs)
1583/62	841/33	1388/55	1200/2646

- Dimensions may vary based on selected engine configuration.
- The delivery date of model with\*should be negotiated specifically.

## Propulsion Engines

# 6M33



### General Specifications

<b>Configuration</b>	6 Cylinders, in line, 4-stroke diesel		
<b>Power Output Size</b>	SAE1/14"		
<b>Bore x Stroke</b>	5.91 x 7.28 in	150 x 185mm	
<b>Displacement</b>	1196 cu in	19.6L	
<b>Emission</b>	IMO II		

### Commercial Ratings

Model	Ps	kW	rpm	Aspiration	Fuel System	Rating
6M33C550-15	550	404	1500	TA	Mechanical	P1
6M33C600-18	600	441	1800	TA	Mechanical	P1
6M33C650-18	650	478	1800	TA	Mechanical	P1
6M33C700-18	700	515	1800	TA	Mechanical	P1
6M33C750-18	750	551	1800	TA	Mechanical	P2

### Main Dimensions & Dry Weight

L(mm/in)	W(mm/in)	H(mm/in)	Dry Weight (kg/lbs)
1884/74	1210/48	1418/56	2390/5269

- Dimensions may vary based on selected engine configuration.
- The delivery date of model with\*should be negotiated specifically.



## Propulsion Engines

# 12M33



### General Specifications

<b>Configuration</b>	12 Cylinders, V-type, 4-stroke diesel
<b>Power Output Size</b>	SAE0/18"
<b>Bore x Stroke</b>	5.91 x 7.28 in 150 x 185 mm
<b>Displacement</b>	2392 cu in 39.2L
<b>Emission</b>	IMO II

### Commercial Ratings

Model	Ps	kW	rpm	Aspiration	Fuel System	Rating
12M33C1000-15	1000	735	1500	TA	Mechanical	P1
12M33C1200-18	1200	882	1800	TA	Mechanical	P1
12M33C1300-18	1300	956	1800	TA	Mechanical	P1
12M33C1400-18	1400	1029	1800	TA	Mechanical	P1
12M33C1500-18	1500	1103	1800	TA	Mechanical	P2

### Main Dimensions & Dry Weight

L(mm/in)	W(mm/in)	H(mm/in)	Dry Weight (kg/lbs)
2404/95	1444/57	1584/62	3900/8598

- Dimensions may vary based on selected engine configuration.
- The delivery date of model with\*should be negotiated specifically.

## Propulsion Engines

# X6170



### General Specifications

<b>Configuration</b>	6 Cylinders, in line, 4-stroke diesel
<b>Power Output Size</b>	SAE0/18"
<b>Bore x Stroke</b>	6.69 x 7.87 in 170 x 200mm
<b>Displacement</b>	1662 cu in 27.24L
<b>Emission</b>	IMO II

### Commercial Ratings

Model	Ps	kW	rpm	Aspiration	Fuel System	Rating
X6170ZC350-1	350	258	1000	TA	Mechanica	P1
X6170ZC408-1	408	300	1000	TA	Mechanica	P1
X6170ZC450-1	450	330	1000	TA	Mechanica	P1
X6170ZC480-2	480	353	1200	TA	Mechaica	P1
X6170ZC540-2	540	397	1200	TA	Mechanical	P1
X6170ZC580-3	580	426	1350	TA	Mechanical	P1
X6170ZC620-2	620	456	1200	TA	Mechanical	P1
X6170ZC620-5	620	456	1500	TA	Mechanical	P1
X6170ZC650-2	650	478	1200	TA	Mechanical	P1
X6170ZC680-3	680	500	1350	TA	Mechanical	P1
X6170ZC756-5	756	556	1500	TA	Mechanical	P1
X6170ZC818-5	818	601	1500	TA	Mechanical	P1
X6170ZC835-5	835	614	1548	TA	Mechanical	P2

### Main Dimensions & Dry Weight

L(mm/in)	W(mm/in)	H(mm/in)	Dry Weight (kg/lbs)
2463/97	1200/47	1650/65	3100/6834

- Dimensions may vary based on selected engine configuration.
- The delivery date of model with\*should be negotiated specifically.

## Propulsion Engines

# 8170



### General Specifications

<b>Configuration</b>	8 Cylinders, in line, 4-stroke diesel
<b>Power Output Size</b>	SAE0/18 "
<b>Bore x Stroke</b>	6.69 x 7.87 in 170 x 200 mm
<b>Displacement</b>	2216 cu in 36.32L
<b>Emission</b>	IMO II

### Commercial Ratings

Model	Ps	kW	rpm	Aspiration	Fuel System	Rating
8170ZC600-1	600	441	1000	TA	Mechanical	P1
8170ZC720-2	720	530	1200	TA	Mechanical	P1
8170ZC818-3	818	601	1350	TA	Mechanical	P1
8170ZC830-2	830	610	1200	TA	Mechanical	P1
8170ZC900-3	900	661	1350	TA	Mechanical	P1
8170ZC900-5	900	661	1500	TA	Mechanical	P1
8170ZC1000-5	1000	735	1500	TA	Mechanical	P1

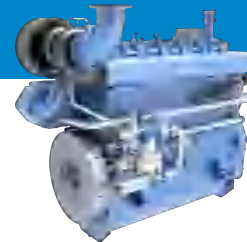
### Main Dimensions & Dry Weight

L(mm/in)	W(mm/in)	H(mm/in)	Dry Weight (kg/lbs)
2650/104	1044/41	1818/72	3800/8378

- Dimensions may vary based on selected engine configuration.
- The delivery date of model with\*should be negotiated specifically.

## Propulsion Engines

# CW6200



### General Specifications

<b>Configuration</b>	6 Cylinders, in line, 4-stroke diesel
<b>Bore x Stroke</b>	7.87 x 10.63 in 200 x 270mm
<b>Displacement</b>	3105 cu in 50.89L
<b>Emission</b>	IMO II
<b>Rating</b>	P1

### Commercial Ratings

Model	Ps	kW	rpm	Aspiration	Fuel System	Fuel
CW6200ZC-7	612	450	750	TA	Mechanical	MGO/MDO/HFO
CW6200ZC	816	600	1000	TA	Mechanical	MGO/MDO
XCW6200ZC	950	698	1000	TA	Mechanical	MGO/MDO
XCW6200ZC-10	1102	810	1000	TA	Mechanical	MGO/MDO

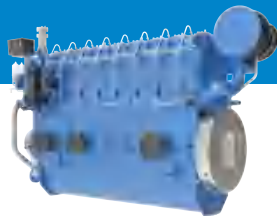
### Main Dimensions & Dry Weight

L(mm/in)	W(mm/in)	H(mm/in)	Dry Weight (kg/lbs)
2828/111	1736/68	2412/95	6400-6500/14110-14330

- Dimensions may vary based on selected engine configuration.
- The delivery date of model with\*should be negotiated specifically.

## Propulsion Engines

# CW8200



### General Specifications

<b>Configuration</b>	8 Cylinders, in line, 4-stroke diesel
<b>Bore x Stroke</b>	7.87 x 10.63 in 200 x 270 mm
<b>Displacement</b>	4140 cu in 67.86L
<b>Emission</b>	IMO II
<b>Rating</b>	P1

### Commercial Ratings

Model	Ps	kW	rpm	Aspiration	Fuel System	Fuel
XCW8200ZC	1263	928	1000	TA	Mechanica	MGO/MDO
XCW8200ZC-10	1400	1030	1000	TA	Mechanical	MGO/MDO

### Main Dimensions & Dry Weight

L(mm/in)	W(mm/in)	H(mm/in)	Dry Weight (kg/lbs)
3388/133	1736/68	2412/95	7800/17196

- Dimensions may vary based on selected engine configuration.
- The delivery date of model with\*should be negotiated specifically.

## Propulsion Engines

# CW12V200



### General Specifications

<b>Configuration</b>	12 Cylinders, V-type, 4-stroke diesel
<b>Bore x Stroke</b>	7.87 x 10.63 in 200 x 270mm
<b>Displacement</b>	6211 cu in 101.78L
<b>Emission</b>	IMO II
<b>Rating</b>	P1

### Commercial Ratings

Model	Ps	kW	rpm	Aspiration	Fuel System	Fuel
CW12V200ZC	1633	1200	1000	TA	Mechanical	MGO/MDO/HFO
XCW12V200ZC-1	1960	1440	1000	TA	Mechanical	MGO/MDO

### Main Dimensions & Dry Weight

L(mm/in)	W(mm/in)	H(mm/in)	Dry Weight (kg/lbs)
3953/156	1700/67	2600/102	10900/24030

- Dimensions may vary based on selected engine configuration.
- The delivery date of model with\*should be negotiated specifically.

## Propulsion Engines

# CW16V200



### General Specifications

<b>Configuration</b>	16 Cylinders, V-type, 4-stroke diesel		
<b>Bore x Stroke</b>	7.87 x 10.63 in 200 x 270 mm		
<b>Displacement</b>	8280 cu in	135.68L	
<b>Emission</b>	IMO II		
<b>Rating</b>	P1		

### Commercial Ratings

Model	Ps	kW	rpm	Aspiration	Fuel System	Fuel
CW16V200ZC-6	2177	1600	1000	TA	Mechanical	MGO/MDO
CW16V200ZC	2395	1760	1000	TA	Mechanical	MGO/MDO

### Main Dimensions & Dry Weight

L(mm/in)	W(mm/in)	H(mm/in)	Dry Weight (kg/lbs)
4603.5/181	1700/67	2745/108	13680/30159

- Dimensions may vary based on selected engine configuration.
- The delivery date of model with\*should be negotiated specifically.

## Propulsion Engines

# CW6250



### General Specifications

<b>Configuration</b>	6 Cylinders, in line, 4-stroke diesel		
<b>Bore x Stroke</b>	9.84 x 11.81 in 250 x 300mm		
<b>Displacement</b>	5392 cu in	88.36L	
<b>Emission</b>	IMO II		
<b>Rating</b>	P1		

### Commercial Ratings

Model	Ps	kW	rpm	Aspiration	Fuel System	Fuel
CW6250ZLC-1	1500	1103	750	TA	Mechanical	MGO/MDO
CW6250ZLC-2	1800	1323	900	TA	Mechanical	MGO/MDO
CW6250ZLC	2000	1470	1000	TA	Mechanical	MGO/MDO

### Main Dimensions & Dry Weight

L(mm/in)	W(mm/in)	H(mm/in)	Dry Weight (kg/lbs)
3816/150	1369/54	2457/97	12000/26455

- Dimensions may vary based on selected engine configuration.
- The delivery date of model with\*should be negotiated specifically.

## Propulsion Engines

# CW8250



### General Specifications

<b>Configuration</b>	8 Cylinders, in line, 4-stroke diesel
<b>Bore x Stroke</b>	9.84 x 11.81 in 250 x 300 mm
<b>Displacement</b>	7189 cu in 117.81L
<b>Emission</b>	IMO II
<b>Rating</b>	P1

### Commercial Ratings

Model	Ps	kW	rpm	Aspiration	Fuel System	Fuel
CW8250ZLC-1	2000	1470	750	TA	Mechanical	MGO/MDO
CW8250ZLC-2	2395	1760	900	TA	Mechanical	MGO/MDO
CW8250ZLC	2667	1960	1000	TA	Mechanical	MGO/MDO

### Main Dimensions & Dry Weight

L(mm/in)	W(mm/in)	H(mm/in)	Dry Weight (kg/lbs)
4596/181	1369/54	2457/97	15300/33731

- Dimensions may vary based on selected engine configuration.
- The delivery date of model with\*should be negotiated specifically.

## Propulsion Engines

# 6WH20



### General Specifications

<b>Configuration</b>	6 Cylinders, in line, 4-stroke diesel
<b>Bore x Stroke</b>	7.88 x 11.81 in 200 x 300 mm
<b>Displacement</b>	3450.9 cu in 56.55L
<b>Emission</b>	IMO II
<b>Rating</b>	P1

### Commercial Ratings

Model	Ps	kW	rpm	Aspiration	Fuel System	Fuel
6WH20LC1230-1	1230	905	1000	TA	Mechanical	MGO/MDO
6WH20LC1360-1	1360	1000	1000	TA	Mechanical	MGO/MDO
6WH20LC1520-1	1520	1118	1000	TA	Mechanical	MGO/MDO
6WH20LC1632-1	1632	1200	1000	TA	Mechanical	MGO/MDO/HFO

### Main Dimensions & Dry Weight

L(mm/in)	W(mm/in)	H(mm/in)	Dry Weight (kg/lbs)
3532/139	1365/54	2642/104	9800/21605

- Dimensions may vary based on selected engine configuration.
- The delivery date of model with\*should be negotiated specifically.

## Propulsion Engines

# 8WH20



### General Specifications

<b>Configuration</b>	8 Cylinders, in line, 4-stroke diesel
<b>Bore x Stroke</b>	7.88×11.81 in 200 x 300 mm
<b>Displacement</b>	4601.4 cu in 75.4L
<b>Emission</b>	IMO II
<b>Rating</b>	P1

### Commercial Ratings

Model	Ps	kW	rpm	Aspiration	Fuel System	Fuel
8WH20LC2000-1	2000	1470	1000	TA	Mechanical	MGO/MDO
8WH20LC2176-1	2176	1600	1000	TA	Mechanical	MGO/MDO

### Main Dimensions & Dry Weight

L(mm/in)	W(mm/in)	H(mm/in)	Dry Weight (kg/lbs)
4132/163	1365/54	2642/104	12500/27500

- Dimensions may vary based on selected engine configuration.
- The delivery date of model with\*should be negotiated specifically.

## Propulsion Engines

# 6WH25



### General Specifications

<b>Configuration</b>	6 Cylinders, in line, 4-stroke diesel
<b>Bore x Stroke</b>	9.84 x12.99 in 250 x 330mm
<b>Displacement</b>	5930.89 cu in 97.19L
<b>Emission</b>	IMO II
<b>Rating</b>	P1

### Commercial Ratings

Model	Ps	kW	rpm	Aspiration	Fuel System	Fuel
6WH25LC2000-7.5	2000	1470	750	TA	Mechanical	MGO/MDO
6WH25LC2000-1	2000	1470	1000	TA	Mechanical	MGO/MDO
6WH25LC2204-9	2204	1620	900	TA	Mechanical	MGO/MDO
6WH25LC2448-1	2448	1800	1000	TA	Mechanical	MGO/MDO

### Main Dimensions & Dry Weight

L(mm/in)	W(mm/in)	H(mm/in)	Dry Weight (kg/lbs)
4356/171	1710/67	2829/111	16800/37038

- Dimensions may vary based on selected engine configuration.
- The delivery date of model with\*should be negotiated specifically.

## Propulsion Engines

# 8WH25



### General Specifications

<b>Configuration</b>	8 Cylinders, in line, 4-stroke diesel
<b>Bore x Stroke</b>	9.84x12.99 in 250x330mm
<b>Displacement</b>	7908.97 cu in 129.6L
<b>Emission</b>	IMO II
<b>Rating</b>	P1

### Commercial Ratings

Model	Ps	kW	rpm	Aspiration	Fuel System	Fuel
8WH25LC2720-7.5	2720	2000	750	TA	Mechanical	MGO/MDO
8WH25LC3000-9	3000	2207	900	TA	Mechanical	MGO/MDO
8WH25LC3000-1	3000	2205	1000	TA	Mechanical	MGO/MDO

### Main Dimensions & Dry Weight

L(mm/in)	W(mm/in)	H(mm/in)	Dry Weight (kg/lbs)
5136/202	1710/67	2829/111	21000/46200

- Dimensions may vary based on selected engine configuration.
- The delivery date of model with\*should be negotiated specifically.

## Propulsion Engines

# 6WH28



### General Specifications

<b>Configuration</b>	6 Cylinders, in line, 4-stroke diesel
<b>Bore x Stroke</b>	11.02 x 16.14 in 280 x 410 mm
<b>Displacement</b>	9245.11 cu in 151.5L
<b>Emission</b>	IMO II
<b>Rating</b>	P1

### Commercial Ratings

Model	Ps	kW	rpm	Aspiration	Fuel System	Fuel
6WH28C3046-7.5	3046	2240	750	TA	Mechanical	MGO/MDO/HFO
6WH28C3264-8	3264	2400	800	TA	Mechanical	MGO/MDO/HFO

### Main Dimensions & Dry Weight

L(mm/in)	W(mm/in)	H(mm/in)	Dry Weight (kg/lbs)
5068/200	1967/77	3510/138	24000/52911

- Dimensions may vary based on selected engine configuration.
- The delivery date of model with\*should be negotiated specifically.

## Propulsion Engines

# 8WH28



### General Specifications

<b>Configuration</b>	8 Cylinders, in line, 4-stroke diesel
<b>Bore x Stroke</b>	11.02x16.14 in 280x410mm
<b>Displacement</b>	12327.3 cu in 202L
<b>Emission</b>	IMO II
<b>Rating</b>	P1

### Commercial Ratings

Model	Ps	kW	rpm	Aspiration	Fuel System	Fuel
8WH28C4080-7.5	4080	3000	750	TA	Mechanical	MGO/MDO/HFO
8WH28C4352-8	4352	3200	800	TA	Mechanical	MGO/MDO/HFO

### Main Dimensions & Dry Weight

L(mm/in)	W(mm/in)	H(mm/in)	Dry Weight (kg/lbs)
5949/234	1967/78	3510/138	29000/63800

- Dimensions may vary based on selected engine configuration.
- The delivery date of model with\*should be negotiated specifically.

## Propulsion Engines

# WH32



### General Specifications

<b>Configuration</b>	6/8/9 Cylinders,4-stroke diesel
<b>Bore x Stroke</b>	12.6x15.75 in 320x400 mm
<b>Displacement Per Cylinder</b>	1963.13 cu in 32.17L
<b>Emission</b>	IMO II
<b>Rating</b>	P1

### Commercial Ratings

Model	Ps	kW	rpm	Aspiration	Fuel System	Fuel
6WH32C4080-7.5	4080	3000	750	TA	Mechanical	MGO/MDO/HFO
8WH32C5440-7.5	5440	4000	750	TA	Mechanical	MGO/MDO/HFO
9WH32C6120-7.5	6120	4500	750	TA	Mechanical	MGO/MDO/HFO

### Main Dimensions & Dry Weight

	L(mm/in)	W(mm/in)	H(mm/in)	Dry Weight (kg/lbs)
6WH32	5940/234	2630/104	4010/158	38000/83776
8WH32	7000/276	2715/107	4490/177	49000/108027
9WH32	7530/296	2715/107	4490/177	51000/112436

- Dimensions may vary based on selected engine configuration.
- The delivery date of model with\*should be negotiated specifically.



## Propulsion Engines

# WP3.2



### General Specifications

<b>Configuration</b>	4 Cylinders, in line, 4-stroke diesel	
<b>Power Output size</b>	SAE 3 / 11.5"	SAE4 / 7.5"
<b>Bore x Stroke</b>	3.86×4.14 in	98×105(mm)
<b>Displacement</b>	193.45 cu in	3.17L
<b>Emission</b>	NR	

### Commercial Ratings

Model	Ps	kW	rpm	Aspiration	Fuel System	Rating
WP3.2C34-15E321	34	25	1500	NA	Common Rail	P1
WP3.2C37-18E321	37	27	1800	NA	Common Rail	P1
WP3.2C41-15E321	41	30	1500	NA	Common Rail	P1
WP3.2C50-24E321	50	37	2400	NA	Common Rail	P1

### Main Dimensions & Dry Weight

L(mm/in)	W(mm/in)	H(mm/in)	Dry Weight (kg/lbs)
898/35	612/24	722/ 28	300/660

- Dimensions may vary based on selected engine configuration.
- The delivery date of model with\*should be negotiated specifically.

## Propulsion Engines

# WP2.3N



### General Specifications

<b>Configuration</b>	4 Cylinders, in line, 4-stroke diesel	
<b>Power Output size</b>	SAE 3 / 11.5"	
<b>Bore x Stroke</b>	3.51×3.62 in	89×92mm
<b>Displacement</b>	140.36 cu in	2.3L
<b>Emission</b>	NR	

### Commercial Ratings

Model	Ps	kW	rpm	Aspiration	Fuel System	Rating
WP2.3NC54-18E220	54	40	1800	TA	Common Rail	P1
WP2.3NC68-18E220	68	50	1800	TA	Common Rail	P1
WP2.3NC82-18E220	82	60	1800	TA	Common Rail	P1
WP2.3NC88-32E220	88	65	3200	TA	Common Rail	P3
WP2.3NC102-21E220	102	75	2100	TA	Common Rail	P1
WP2.3NC102-32E220	102	75	3200	TA	Common Rail	P3
WP2.3NC110-25E220	110	81	2500	TA	Common Rail	P1
WP2.3NC115-32E220	115	85	3200	TA	Common Rail	P3
WP2.3NC130-32E220	130	95	3200	TA	Common Rail	P3

### Main Dimensions & Dry Weight

L(mm/in)	W(mm/in)	H(mm/in)	Dry Weight (kg/lbs)
854/34	688/27	826/33	310/682

- Dimensions may vary based on selected engine configuration.
- The delivery date of model with\*should be negotiated specifically.

## Propulsion Engines

# WP3N



### General Specifications

<b>Configuration</b>	4 Cylinders, in line, 4-stroke diesel		
<b>Power Output size</b>	SAE 3 / 11.5"		
<b>Bore x Stroke</b>	3.70×4.22 in	94×107mm	
<b>Displacement</b>	181.24 cu in	2.97L	
<b>Emission</b>	NR		

### Commercial Ratings

Model	Ps	kW	rpm	Aspiration	Fuel System	Rating
WP3NC115-30E220	115	85	3000	TA	Common Rail	P3
WP3NC130-30E220	130	95	3000	TA	Common Rail	P3
WP3NC150-30E220	150	110	3000	TA	Common Rail	P3
WP3NC160-30E220	160	118	3000	TA	Common Rail	P3

### Main Dimensions & Dry Weight

L(mm/in)	W(mm/in)	H(mm/in)	Dry Weight (kg/lbs)
937/37	690/27	775/31	350/772

- Dimensions may vary based on selected engine configuration.
- The delivery date of model with\*should be negotiated specifically.

## Propulsion Engines

# WP4.1N



### General Specifications

<b>Configuration</b>	4 Cylinders, in line, 4-stroke diesel		
<b>Power Output size</b>	SAE 3 / 11.5"		
<b>Bore x Stroke</b>	4.14×4.65 in	105×118mm	
<b>Displacement</b>	249.47 cu in	4.088L	
<b>Emission</b>	IMO II		

### Commercial Ratings

Model	Ps	kW	rpm	Aspiration	Fuel System	Rating
WP4.1NC120-18E220	120	88	1800	TA	Common Rail	P1
WP4.1NC130-21E220	130	95	2100	TA	Common Rail	P1
WP4.1NC142-18E220	142	105	1800	TA	Common Rail	P1
WP4.1NC163-21E220	163	120	2100	TA	Common Rail	P1
WP4.1NC190-26E220	190	140	2600	TA	Common Rail	P3

### Main Dimensions & Dry Weight

L(mm/in)	W(mm/in)	H(mm/in)	Dry Weight (kg/lbs)
1206/47	710/28	846/33	490/1080

- Dimensions may vary based on selected engine configuration.
- The delivery date of model with\*should be negotiated specifically.

## Propulsion Engines

# WP7



### General Specifications

<b>Configuration</b>	6 Cylinders, in line, 4-stroke diesel
<b>Power Output Size</b>	SAE1/14"
<b>Bore x Stroke</b>	4.25 x 5.35 in 108 x 136mm
<b>Displacement</b>	456 cu in 7.47L
<b>Emission</b>	IMO II

### Commercial Ratings

Model	Ps	kW	rpm	Aspiration	Fuel System	Rating
WP7C150-15E120	150	110	1500	TA	Common Rail	P1
WP7C240-18E120	240	176	1800	TA	Common Rail	P1
WP7C268-18E120	268	197	1800	TA	Common Rail	P1
WP7C278-21E120	278	205	2100	TA	Common Rail	P1
WP7C300-22.5E120	300	220	2250	TA	Common Rail	P2

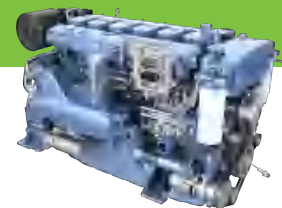
### Main Dimensions & Dry Weight

L(mm/in)	W(mm/in)	H(mm/in)	Dry Weight (kg/lbs)
1398/55	865/34	980/38	900/1984

- Dimensions may vary based on selected engine configuration.
- The delivery date of model with\*should be negotiated specifically.

## Propulsion Engines

# WP10



### General Specifications

<b>Configuration</b>	6 Cylinders, in line, 4-stroke diesel
<b>Power Output Size</b>	SAE1/14"
<b>Bore x Stroke</b>	4.96 x 5.12 in 126 x 130 mm
<b>Displacement</b>	594 cu in 9.726L
<b>Emission</b>	IMO II

### Commercial Ratings

Model	Ps	kW	rpm	Aspiration	Fuel System	Rating
WP10C313-21	313	230	2130	TA	Common Rail	P1
WP10C350-18	350	257	1800	TA	Common Rail	P1
WP10C375-21	375	275	2100	TA	Common Rail	P2
WP10C395-22	395	290	2200	TA	Common Rail	P3

### Main Dimensions & Dry Weight

L(mm/in)	W(mm/in)	H(mm/in)	Dry Weight (kg/lbs)
1482/58	981/39	1016/40	1070/2359

- Dimensions may vary based on selected engine configuration.
- The delivery date of model with\*should be negotiated specifically.

## Propulsion Engines

# WP12



### General Specifications

<b>Configuration</b>	6 Cylinders, in line, 4-stroke diesel		
<b>Power Output Size</b>	SAE 1 / 14"		
<b>Bore x Stroke</b>	4.96x6.10 in	126 x 155mm	
<b>Displacement</b>	708 cu in	11.596L	
<b>Emission</b>	IMO II		

### Commercial Ratings

Model	Ps	kW	rpm	Aspiration	Fuel System	Rating
WP12C500-21E121	500	368	2100	TA	Common Rail	P2
WP12C550-21E121	550	405	2100	TA	Common Rail	P3

### Main Dimensions & Dry Weight

L(mm/in)	W(mm/in)	H(mm/in)	Dry Weight (kg/lbs)
1695/67	840/33	1280/50	1200/2646

- Dimensions may vary based on selected engine configuration.
- The delivery date of model with\*should be negotiated specifically.

## Propulsion Engines

# WP13



### General Specifications

<b>Configuration</b>	6 Cylinders, in line, 4-stroke diesel		
<b>Power Output size</b>	SAE1/14"		
<b>Bore x Stroke</b>	5.00x6.50 in	127 x 165 mm	
<b>Displacement</b>	765 cu in	12.54L	
<b>Emission</b>	IMO II		

### Commercial Ratings

Model	Ps	kW	rpm	Aspiration	Fuel System	Rating
WP13C500-18E121	500	368	1800	TA	Common Rail	P1
WP13C550-18E121	550	405	1800	TA	Common Rail	P3
WP13C550-21E121	550	405	2100	TA	Common Rail	P3
WP13Y550-18E220	550	405	1800	TA	Common Rail	P2
WP13Y600-21E220	600	441	2100	TA	Common Rail	P3

### Main Dimensions & Dry Weight

L(mm/in)	W(mm/in)	H(mm/in)	Dry Weight (kg/lbs)
1595/63	844/33	1388/55	1200/2646

- Dimensions may vary based on selected engine configuration.
- The delivery date of model with\*should be negotiated specifically.

## Propulsion Engines

# WP17T



### General Specifications

<b>Configuration</b>	6 Cylinders, in line, 4-stroke diesel		
<b>Power Output size</b>	SAE1/14"		
<b>Bore x Stroke</b>	5.59x6.89 in	142 x 175 mm	
<b>Displacement</b>	1013cu in	16.6L	
<b>Emission</b>	IMO II		

### Commercial Ratings

Model	Ps	kW	rpm	Aspiration	Fuel System	Rating
WP17TC550-18E220*	550	405	1800	TA	Common Rail	P1
WP17TC600-18E220*	600	441	1800	TA	Common Rail	P1
WP17TC650-18E220*	650	478	1800	TA	Common Rai	P1
WP17TC760-18E220*	760	559	1800	TA	Common Rail	P1
WP17TC800-18E220*	800	588	1800	TA	Common Rail	P1

### Main Dimensions & Dry Weight

L(mm/in)	W(mm/in)	H(mm/in)	Dry Weight (kg/lbs)
1700/67	1030/41	1350/53	1690/3726

- Dimensions may vary based on selected engine configuration.
- The delivery date of model with\*should be negotiated specifically.

## Propulsion Engines

# 6M21



### General Specifications

<b>Configuration</b>	6 Cylinders, in line, 4-stroke diesel		
<b>Power Output size</b>	SAE1/14"		
<b>Bore x Stroke</b>	5.00x6.50 in 127 x 165 mm		
<b>Displacement</b>	765 cu in 12.54L		
<b>Emission</b>	IMO II		

### Commercial Ratings

Model	Ps	kW	rpm	Aspiration	Fuel System	Rating
6M21Y815-23E200	815	599	2300	TA	Common Rail	P3
6M21Y900-23E200	900	662	2300	TA	Common Rail	P4
6M21Y1000-23E200	1000	735	2300	TA	Common Rail	P5

### Main Dimensions & Dry Weight

L(mm/in)	W(mm/in)	H(mm/in)	Dry Weight (kg/lbs)
1670/66	1100/43	1075/42	1450/3197

- Dimensions may vary based on selected engine configuration.
- The delivery date of model with\*should be negotiated specifically.

## Propulsion Engines

# 8M21



### General Specifications

<b>Configuration</b>	8 Cylinders, 4-stroke diesel
<b>Power Output size</b>	SAE1/14"
<b>Bore x Stroke</b>	5x6.5 in 127x165 mm
<b>Displacement</b>	1020.32 cu in 16.72L
<b>Emission</b>	IMO II

### Commercial Ratings

Model	Ps	kW	rpm	Aspiration	Fuel System	Rating
8M21Y1000-23E200	1000	735	2300	TA	Common Rail	P3
8M21Y1100-23E200	1100	809	2300	TA	Common Rail	P3
8M21Y1250-23E200	1250	919	2300	TA	Common Rail	P4
8M21Y1360-23E200	1360	1000	2300	TA	Common Rail	P5

### Main Dimensions & Dry Weight

L(mm/in)	W(mm/in)	H(mm/in)	Dry Weight (kg/lbs)
1600/63	1180/46	1296/51	1900/4189

- Dimensions may vary based on selected engine configuration.
- The delivery date of model with\*should be negotiated specifically.

## Propulsion Engines

# 6M33



### General Specifications

<b>Configuration</b>	6 Cylinders, in line, 4-stroke diesel
<b>Power Output size</b>	SAE 0 / 18"
<b>Bore x Stroke</b>	5.91x7.29 in 150x185mm
<b>Displacement</b>	1196.11 cu in 19.6L
<b>Emission</b>	IMO II

### Commercial Ratings

Model	Ps	kW	rpm	Aspiration	Fuel System	Rating
6M33C750-18E211	750	552	1800	TA	Common Rail	P1
6M33C830-18E211	830	610	1800	TA	Common Rail	P2
6M33C912-19E211	912	670	1900	TA	Common Rail	P3
6M33C1020-20E211	1020	750	2000	TA	Common Rail	P4

### Main Dimensions & Dry Weight

L(mm/in)	W(mm/in)	H(mm/in)	Dry Weight (kg/lbs)
1934/76	1270/50	1428/56	2390/5258

- Dimensions may vary based on selected engine configuration.
- The delivery date of model with\*should be negotiated specifically.

## Propulsion Engines

# 12M33



### General Specifications

<b>Configuration</b>	12 Cylinders, V-type, 4-stroke diesel
<b>Power Output size</b>	SAE 0 / 18"
<b>Bore x Stroke</b>	5.91×7.29 in 150×185mm
<b>Displacement</b>	2392.22 cu in 39.2L
<b>Emission</b>	IMO II

### Commercial Ratings

Model	Ps	kW	rpm	Aspiration	Fuel System	Rating
12M33C1400-18E211	1400	1030	1800	TA	Common Rail	P1
12M33C1500-18E211	1500	1104	1800	TA	Common Rail	P2
12M33C1650-18E211	1650	1214	1800	TA	Common Rail	P3

### Main Dimensions & Dry Weight

L(mm/in)	W(mm/in)	H(mm/in)	Dry Weight (kg/lbs)
2404/95	1507/59	1733/68	3900/8580

- Dimensions may vary based on selected engine configuration.
- The delivery date of model with\*should be negotiated specifically.

## Propulsion Engines

# 16M33



### General Specifications

<b>Configuration</b>	16 Cylinders, V-type, 4-stroke diesel
<b>Power Output size</b>	SAE 00 / 21"
<b>Bore x Stroke</b>	5.91×7.29 in 150×185mm
<b>Displacement</b>	3190 cu in 52.28L
<b>Emission</b>	IMO II

### Commercial Ratings

Model	Ps	kW	rpm	Aspiration	Fuel System	Rating
16M33C1750-16E211	1750	1287	1600	TA	Common Rail	P1
16M33C1850-16E211	1850	1361	1600	TA	Common Rail	P2
16M33C1950-18E211	1950	1434	1800	TA	Common Rail	P1
16M33C2100-18E211	2100	1545	1800	TA	Common Rail	P2

### Main Dimensions & Dry Weight

L(mm/in)	W(mm/in)	H(mm/in)	Dry Weight (kg/lbs)
2970/117	1400/55	1930/76	6500/14300

- Dimensions may vary based on selected engine configuration.
- The delivery date of model with\*should be negotiated specifically.

## Propulsion Engines

# 12M55



### General Specifications

<b>Configuration</b>	12 Cylinders, V-type, 4-stroke diesel		
<b>Power Output size</b>	SAE 00 / 21"		
<b>Bore x Stroke</b>	7.09×8.46 in	180×215mm	
<b>Displacement</b>	4006 cu in	65.65L	
<b>Emission</b>	IMO II		

### Commercial Ratings

Model	Ps	kW	rpm	Aspiration	Fuel System	Rating
12M55C2450-16E200	2450	1800	1600	TA	Common Rail	P1
12M55C2700-16E200	2700	1985	1600	TA	Common Rail	P2
12M55C2250-18E201	2250	1654	1800	TA	Common Rail	P1
12M55C2450-18E201	2450	1800	1800	TA	Common Rail	P1
12M55C2600-18E201	2600	1912	1800	TA	Common Rail	P1
12M55C2738-18E201	2738	2013	1800	TA	Common Rail	P1
12M55C3000-18E201	3000	2205	1800	TA	Common Rail	P2
12M55C3450-18E201	3450	2536	1800	TA	Common Rail	P3

### Main Dimensions & Dry Weight

L(mm/in)	W(mm/in)	H(mm/in)	Dry Weight (kg/lbs)
2920/115	1560/61.4	2453/96.6	10000/22046

- Dimensions may vary based on selected engine configuration.
- The delivery date of model with\*should be negotiated specifically.

## Propulsion Engines

# 16M55



### General Specifications

<b>Configuration</b>	16 Cylinders, V-type, 4-stroke diesel		
<b>Power Output size</b>	SAE 00 / 21"		
<b>Bore x Stroke</b>	7.09×8.46 in	180×215mm	
<b>Displacement</b>	5340 cu in	87.5L	
<b>Emission</b>	IMO II		

### Commercial Ratings

Model	Ps	kW	rpm	Aspiration	Fuel System	Rating
16M55C2800-15E210	2800	2060	1500	TA	Common Rail	P1
16M55C3000-15E210	3000	2205	1500	TA	Common Rail	P1
16M55C3400-15E210	3400	2500	1500	TA	Common Rail	P1
16M55C3128-18E211	3128	2300	1800	TA	Common Rail	P1
16M55C3400-18E211	3400	2500	1800	TA	Common Rail	P1
16M55C3810-18E211	3810	2800	1800	TA	Common Rail	P1
16M55C4000-18E211	4000	2941	1800	TA	Common Rail	P2

### Main Dimensions & Dry Weight

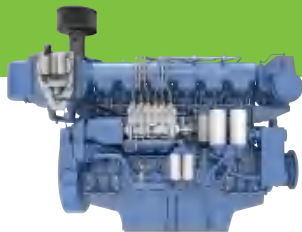
L(mm/in)	W(mm/in)	H(mm/in)	Dry Weight (kg/lbs)
3518/138.5	1555/61.2	2484/97.8	11500/25353

- Dimensions may vary based on selected engine configuration.
- The delivery date of model with\*should be negotiated specifically.



## Propulsion Engines

# 6170



### General Specifications

<b>Configuration</b>	6 Cylinders,4-stroke diesel
<b>Power Output size</b>	SAE0/18"
<b>Bore x Stroke</b>	6.69x7.87 in 170x200 mm
<b>Displacement</b>	1662 cu in 27.24L
<b>Emission</b>	IMO II

### Commercial Ratings

Model	Ps	kW	rpm	Aspiration	Fuel System	Rating
X6170ZC350-1	350	258	1000	TA	Electric unit pump	P1
X6170ZC408-1	408	300	1000	TA	Electric unit pump	P1
X6170ZC450-1	450	330	1000	TA	Electric unit pump	P1
X6170ZC480-2	480	353	1200	TA	Electric unit pump	P1
X6170ZC540-1*	540	397	1200	TA	Electric unit pump	P1
X6170ZC540-2	540	397	1200	TA	Electric unit pump	P1
X6170ZC580-3	580	426	1350	TA	Electric unit pump	P1
X6170ZC620-2	620	456	1200	TA	Electric unit pump	P1
X6170ZC620-5	620	456	1500	TA	Electric unit pump	P1
X6170ZC650-2	650	478	1200	TA	Electric unit pump	P1
X6170ZC680-3	680	500	1350	TA	Electric unit pump	P1
X6170ZC756-5	756	556	1500	TA	Electric unit pump	P1
X6170ZC818-5	818	601	1500	TA	Electric unit pump	P1
X6170ZC835-5	835	614	1548	TA	Electric unit pump	P2

### Main Dimensions & Dry Weight

L(mm/in)	W(mm/in)	H(mm/in)	Dry Weight (kg/lbs)
2463/97	1200/47	1650/65	3100/6834

- Dimensions may vary based on selected engine configuration.
- The delivery date of model with\*should be negotiated specifically.

## Propulsion Engines

# 8170



### General Specifications

<b>Configuration</b>	8 Cylinders,4-stroke diesel
<b>Power Output size</b>	SAE0/18"
<b>Bore x Stroke</b>	6.69x7.87 in 170x200 mm
<b>Displacement</b>	2216 cu in 36.32L
<b>Emission</b>	IMO II

### Commercial Ratings

Model	Ps	kW	rpm	Aspiration	Fuel System	Rating
8170ZC600-1	600	441	1000	TA	Electric unit pump	P1
8170ZC720-2	720	530	1200	TA	Electric unit pump	P1
8170ZC818-3	818	601	1350	TA	Electric unit pump	P1
8170ZC900-3	900	661	1350	TA	Electric unit pump	P1
8170ZC900-5	900	661	1500	TA	Electric unit pump	P1
8170ZC1000-5	1000	735	1500	TA	Electric unit pump	P1

### Main Dimensions & Dry Weight

L(mm/in)	W(mm/in)	H(mm/in)	Dry Weight (kg/lbs)
2650/104	1044/41	1818/72	3800/8378

- Dimensions may vary based on selected engine configuration.
- The delivery date of model with\*should be negotiated specifically.

## Propulsion Engines

# 6WH17



### General Specifications

<b>Configuration</b>	6 Cylinders, in line, 4-stroke diesel		
<b>Power Output size</b>	SAE 0/18"		
<b>Bore x Stroke</b>	6.69 x 8.74 in	170 x 222mm	
<b>Displacement</b>	1884 cu in	30.22L	
<b>Emission</b>	IMO II		

### Commercial Ratings

Model	Ps	kW	rpm	Aspiration	Fuel System	Rating
6WH17C650-1	650	478	1000	TA	Common Rail	P1
6WH17C680-2	680	500	1200	TA	Common Rail	P1
6WH17C700-1	700	515	1000	TA	Common Rail	P1
6WH17C750-2	750	551	1200	TA	Common Rail	P1
6WH17C850-2	850	625	1200	TA	Common Rail	P1
6WH17C900-3	900	661	1350	TA	Common Rail	P1
6WH17C900-5	900	661	1500	TA	Common Rail	P1
6WH17C1000-5	1000	735	1500	TA	Common Rail	P1

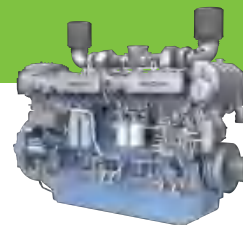
### Main Dimensions & Dry Weight

L(mm/in)	W(mm/in)	H(mm/in)	Dry Weight (kg/lbs)
2355/93	1220/48	1615/64	3500/7700

- Dimensions may vary based on selected engine configuration.
- The delivery date of model with\*should be negotiated specifically.

## Propulsion Engines

# 8WH17



### General Specifications

<b>Configuration</b>	8 Cylinders, in line, 4-stroke diesel		
<b>Power Output size</b>	SAE 0 / 18"		
<b>Bore x Stroke</b>	6.69x8.74 in	170x222mm	
<b>Displacement</b>	2459.7 cu in	40.31L	
<b>Emission</b>	IMO II		

### Commercial Ratings

Model	Ps	kW	rpm	Aspiration	Fuel System	Rating
8WH17C900-1	900	662	1000	TA	Common Rail	P1
8WH17C952-1	952	700	1000	TA	Common Rail	P1
8WH17C1000-2	1000	735	1200	TA	Common Rail	P1
8WH17C1156-2	1156	850	1200	TA	Common Rail	P1
8WH17C1200-3	1200	882	1350	TA	Common Rail	P1
8WH17C1251-5	1251	920	1500	TA	Common Rail	P1
8WH17C1360-5	1360	1000	1500	TA	Common Rail	P1

### Main Dimensions & Dry Weight

L(mm/in)	W(mm/in)	H(mm/in)	Dry Weight (kg/lbs)
2985/118	1130/44	1830/72	4600/10120

- Dimensions may vary based on selected engine configuration.
- The delivery date of model with\*should be negotiated specifically.

# Propulsion Engines

## 12WH17



### General Specifications

<b>Configuration</b>	12 Cylinders , V-type, 4-stroke diesel
<b>Power Output size</b>	SAE 0 / 18"
<b>Bore x Stroke</b>	6.69×7.87 in 170×200mm
<b>Displacement</b>	3324.4 cu in 54.48L
<b>Emission</b>	IMO II

### Commercial Ratings

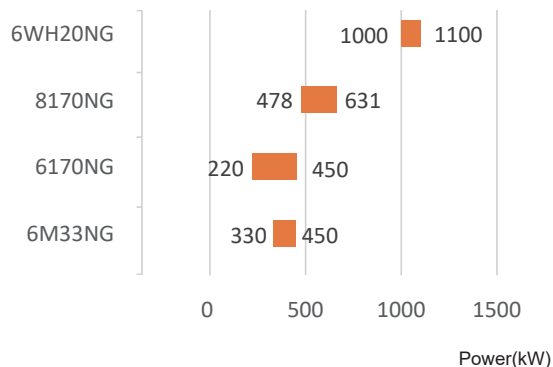
Model	Ps	kW	rpm	Aspiration	Fuel System	Rating
12WH17C1224-2	1224	900	1200	TA	Common Rail	P1
12WH17C1360-2	1360	1000	1200	TA	Common Rail	P1
12WH17C1496-2	1496	1100	1200	TA	Common Rail	P1
12WH17C1632-2	1632	1200	1200	TA	Common Rail	P1
12WH17C1700-5	1700	1250	1500	TA	Common Rail	P1
12WH17C1836-5*	1836	1350	1500	TA	Common Rail	P1
12WH17C1972-5*	1972	1450	1500	TA	Common Rail	P1

### Main Dimensions & Dry Weight

L(mm/in)	W(mm/in)	H(mm/in)	Dry Weight (kg/lbs)
2256/89	1331/52	1856/73	5900/12980

- Dimensions may vary based on selected engine configuration.
- The delivery date of model with\*should be negotiated specifically.

### Model



## Propulsion Engines

# 6M33



### General Specifications

<b>Configuration</b>	6 Cylinders, 4-stroke diesel
<b>Power Output size</b>	SAE1/14"
<b>Bore x Stroke</b>	5.91x7.28 in 150x185 mm
<b>Displacement</b>	1196 cu in 19.6L
<b>Emission</b>	IMO II
<b>Technical route</b>	Single point injection, Spark plug, Lean-burn, Oxygen closed-loop control

### Commercial Ratings

Model	Ps	kW	rpm	Aspiration	Rating
6M33C450-15E220NG	450	330	1500	TA	P1
6M33C500-15E220NG	500	368	1500	TA	P1
6M33C500-18E220NG	500	368	1800	TA	P1
6M33C550-18E220NG	550	405	1800	TA	P1
6M33C571-15E220NG	571	420	1500	TA	P1
6M33C612-18E220NG	612	450	1800	TA	P1

### Main Dimensions & Dry Weight

L(mm/in)	W(mm/in)	H(mm/in)	Dry Weight (kg/lbs)
1915/75	1140/45	1500/59	2390/5269

- Dimensions may vary based on selected engine configuration.
- The delivery date of model with\*should be negotiated specifically.

## Propulsion Engines

# X6170



### General Specifications

<b>Configuration</b>	6 Cylinders, 4-stroke diesel
<b>Power Output size</b>	SAE0/18"
<b>Bore x Stroke</b>	6.69x7.87 in 170x200 mm
<b>Displacement</b>	1662 cu in 27.24L
<b>Emission</b>	IMO II
<b>Technical route</b>	Single point injection, Spark plug, Lean-burn, Oxygen closed-loop control

### Commercial Ratings

Model	Ps	kW	rpm	Aspiration	Rating
X6170ZC300NG1	300	220	1000	TA	P1
X6170ZC350NG1	350	258	1000	TA	P1
X6170ZC408NG2	408	300	1200	TA	P1
X6170ZC450NG2	450	330	1200	TA	P1
X6170ZC490NG2	490	360	1200	TA	P1
X6170ZC550NG3	550	405	1350	TA	P1
X6170ZC612NG5	612	450	1500	TA	P1

### Main Dimensions & Dry Weight

L(mm/in)	W(mm/in)	H(mm/in)	Dry Weight (kg/lbs)
2508/99	1229/48	1815/71	3100/6834

- Dimensions may vary based on selected engine configuration.
- The delivery date of model with\*should be negotiated specifically.

## Propulsion Engines

# 8170



### General Specifications

<b>Configuration</b>	8 Cylinders,4-stroke diesel
<b>Power Output size</b>	SAE0/16"
<b>Bore x Stroke</b>	6.69x7.87 in 170x200 mm
<b>Displacement</b>	2216 cu in 36.32L
<b>Emission</b>	IMO II
<b>Technical route</b>	Single point injection、 Spark plug、 Lean-burn、 Oxygen closed-loopcontrol

### Commercial Ratings

Model	Ps	kW	rpm	Aspiration	Rating
8170ZC650NG2	650	478	1200	TA	P1
8170ZC735NG3	735	540	1350	TA	P1
8170ZC818NG5	818	601	1500	TA	P1
8170ZC900NG5	900	661	1500	TA	P1

### Main Dimensions & Dry Weight

L(mm/in)	W(mm/in)	H(mm/in)	Dry Weight (kg/lbs)
2633/104	1120/44	1915/75	3800/8378

- Dimensions may vary based on selected engine configuration.
- The delivery date of model with\*should be negotiated specifically.

## Propulsion Engines

# 6WH20



### General Specifications

<b>Configuration</b>	6 Cylinders,4-stroke diesel
<b>Bore x Stroke</b>	7.88x11.81 in 200x300 mm
<b>Displacement</b>	3450.9 cu in 56.55L
<b>Emission</b>	IMO II
<b>Technical route</b>	Single point injection、 Spark plug、 Lean-burn、 Oxygen closed-loopcontrol

### Commercial Ratings

Model	Ps	kW	rpm	Aspiration	Rating
6WH20LC1360NG1A1	1360	1000	1000	TA	P1
6WH20LC1496NG1A1	1496	1100	1000	TA	P1

### Main Dimensions & Dry Weight

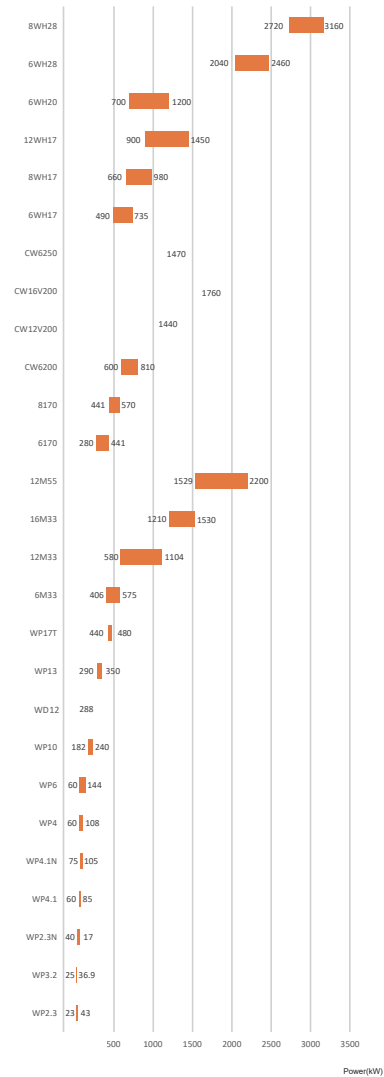
L(mm/in)	W(mm/in)	H(mm/in)	Dry Weight (kg/lbs)
3532/139	1365/54	2462/97	9500/20944

- Dimensions may vary based on selected engine configuration.
- The delivery date of model with\*should be negotiated specifically.



## AUXILIARY ENGINES

- Genuine Marine Design
- Reliability in the most extreme conditions
- Design optimized for maintenance simplicity
- Best in Class fuel consumption and mean time between overhaul



## Auxiliary Engines

# WP2.3



### General Specifications

<b>Configuration</b>	4 Cylinders, in line, 4-stroke diesel
<b>Power Output Size</b>	SAE4/7.5" SAE3/11.5"
<b>Bore x Stroke</b>	3.50 x 3.62 in 89 x 92 mm
<b>Displacement</b>	140 cu in 2.3L
<b>Emission</b>	NR

### Commercial Ratings

Application	Model	kW	Genset power	rpm	Aspiration	Governor Type	Rating
MG/EG	WP2.3CD25E200	23	12/16	1500	NA	Elec	PRP
	WP2.3CD30E201	27	20	1800	NA	Elec	PRP
	WP2.3CD33E200	30	20/24	1500	T	Elec	PRP
	WP2.3CD40E200	36	30	1500	T	Elec	PRP
	WP2.3CD40E201	36	30	1800	T	Elec	PRP
	WP2.3CD48E201	43	30	1800	T	Elec	PRP

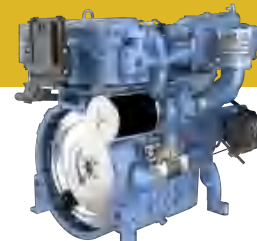
### Main Dimensions & Dry Weight

L(mm/in)	W(mm/in)	H(mm/in)	Dry Weight (kg/lbs)
854/34	620/24	678/27	235/518

- Dimensions may vary based on selected engine configuration.
- The delivery date of model with\*should be negotiated specifically.

## Auxiliary Engines

# WP2.3N



### General Specifications

<b>Configuration</b>	6 Cylinders,4-stroke diesel
<b>Power output Size</b>	SAE3/10"、11.5"
<b>Bore x Stroke</b>	3.5x3.62 in 89x92 mm
<b>Displacement</b>	139.68 cu in 2.289L
<b>Emission</b>	NR

### Commercial Ratings

Application	Model	kW	Genset power	rpm	Aspiration	Governor Type	Rating
MG(CR)	WP2.3NCD44E220	40	30	1500	TA	ECU	PRP
	WP2.3NCD55E220	50	40	1500	TA	ECU	PRP
	WP2.3NCD66E220	60	50	1500	TA	ECU	PRP
	WP2.3NCD78E221	71	64	1800	TA	ECU	PRP

### Main Dimensions & Dry Weight

L(mm/in)	W(mm/in)	H(mm/in)	Dry Weight (kg/lbs)
854/34	650/26	826/33	310/683

- Dimensions may vary based on selected engine configuration.
- The delivery date of model with\*should be negotiated specifically.

## Auxiliary Engines

# WP3.2



### General Specifications

<b>Configuration</b>	4 Cylinders, 4-stroke diesel
<b>Power output Size</b>	SAE3/11.5"
<b>Bore x Stroke</b>	3.86x4.13 in 98x105 mm
<b>Displacement</b>	193.45 cu in 3.17L
<b>Emission</b>	NR

### Commercial Ratings

Application	Model	kW	Genset power	rpm	Aspiration	Governor Type	Rating
MG(CR)	WP3.2CD28E310	25	16/20	1500	NA	ECU	PRP
	WP3.2CD33E311	30	20/24	1800	NA	ECU	PRP
	WP3.2CD36E310	33	24	1500	NA	ECU	PRP
	WP3.2CD41E311	36.9	30	1800	NA	ECU	PRP

### Main Dimensions & Dry Weight

L(mm/in)	W(mm/in)	H(mm/in)	Dry Weight (kg/lbs)
898/35	612/24	729/29	300/661

- Dimensions may vary based on selected engine configuration.
- The delivery date of model with\*should be negotiated specifically.

## Auxiliary Engines

# WP4.1



### General Specifications

<b>Configuration</b>	4 Cylinders, in line, 4-stroke diesel
<b>Power Output Size</b>	SAE3/11.5"
<b>Bore x Stroke</b>	4.13 x 4.65 in 105 x 118 mm
<b>Displacement</b>	250 cu in 4.09L
<b>Emission</b>	NR

### Commercial Ratings

Application	Model	kW	Genset power	rpm	Aspiration	Governor Type	Rating
MG	WP4.1CD66E200	60	40/50	1500	T	Mech/Elec	PRP
	WP4.1CD66E201	60	40/50	1800	T	Mech/Elec	PRP
	WP4.1CD83E200	75	60/64	1500	T	Mech/Elec	PRP
	WP4.1CD83E201	75	60/64	1800	T	Mech/Elec	PRP
	WP4.1CD95E201	85	70	1800	T	Mech/Elec	PRP

### Main Dimensions & Dry Weight

L(mm/in)	W(mm/in)	H(mm/in)	Dry Weight (kg/lbs)
1062/42	625/25	918/36	400/882

- Dimensions may vary based on selected engine configuration.
- The delivery date of model with\*should be negotiated specifically.



## Auxiliary Engines

# WP4.1N



### General Specifications

<b>Configuration</b>	4 Cylinders, 4-stroke diesel
<b>Power output Size</b>	SAE2/11.5"
<b>Bore x Stroke</b>	4.13x4.65 in 105x118 mm
<b>Displacement</b>	249.47 cu in 4.088L
<b>Emission</b>	NR

### Commercial Ratings

Application	Model	kW	Genset power	rpm	Aspiration	Governor Type	Rating
	WP4.1NCD83E220	75	64	1500	NA	ECU	PRP
MG(CR)	WP4.1NCD100E220	90	75	1500	NA	ECU	PRP
	WP4.1NCD115E221	105	90	1800	TA	ECU	PRP

### Main Dimensions & Dry Weight

L(mm/in)	W(mm/in)	H(mm/in)	Dry Weight (kg/lbs)
1328/52	932/37	1036/41	638/1407

- Dimensions may vary based on selected engine configuration.
- The delivery date of model with\*should be negotiated specifically.

## Auxiliary Engines

# WP4



### General Specifications

<b>Configuration</b>	4 Cylinders, in line, 4-stroke diesel
<b>Power Output Size</b>	SAE3/11.5"
<b>Bore x Stroke</b>	4.13 x 5.12 in 105 x 130mm
<b>Displacement</b>	275 cu in 4.5L
<b>Emission</b>	NR

### Commercial Ratings

Application	Model	kW	Genset power	rpm	Aspiration	Governor Type	Rating
	WP4CD66E200	60	40/50	1500	T	Mech/Elec	PRP
	WP4CD66E201	60	40/50	1800	T	Mech/Elec	PRP
MG/EG	WP4CD100E200	90	64/75	1500	TA	Mech/Elec	PRP
	WP4CD100E201	90	64/75	1800	TA	Mech/Elec	PRP
	WP4CD118E201	108	90	1800	TA	Elec	PRP

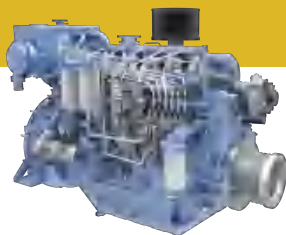
### Main Dimensions & Dry Weight

	L(mm/in)	W(mm/in)	H(mm/in)	Dry Weight (kg/lbs)
MG	1063/42	818/32	1056/42	650/1433
EG	1547/61	780/31	1330/52	600/1323

- Dimensions may vary based on selected engine configuration.
- The delivery date of model with\*should be negotiated specifically.

## Auxiliary Engines

# WP6



### General Specifications

<b>Configuration</b>	6 Cylinders, In line, 4-stroke diesel
<b>Power Output Size</b>	SAE1/11.5"
<b>Bore x Stroke</b>	4.13 x 5.12 in 105 x 130 mm
<b>Displacement</b>	412 cu in 6.75L
<b>Emission</b>	IMO II

### Commercial Ratings

Application	Model	kW	Genset power	rpm	Aspiration	Governor Type	Rating
MG/EG	WP6CD132E200	120	90/100	1500	TA	Mech/Elec	PRP
	WP6CD132E201	120	90/100	1800	TA	Mech/Elec	PRP
MG(CR)	WP6CD132E220	120	90/100	1500	TA	ECU	PRP
	WP6CD132E221	120	90/100	1800	TA	ECU	PRP
MG/EG	WP6CD152E200	138	120	1500	TA	Mech/Elec	PRP
	WP6CD158E201	144	120	1800	TA	Mech/Elec	PRP
MG(CR)	WP6CD152E220	138	120	1500	TA	ECU	PRP
	WP6CD158E221	144	120	1800	TA	ECU	PRP

### Main Dimensions & Dry Weight

	L(mm/in)	W(mm/in)	H(mm/in)	Dry Weight (kg/lbs)
MG	1370/54	818/32	1056/42	750/1653
EG	1803/71	780/31	1165/46	730/1609

- Dimensions may vary based on selected engine configuration.
- The delivery date of model with\*should be negotiated specifically.

## Auxiliary Engines

# WP10



### General Specifications

<b>Configuration</b>	6 Cylinders, In line, 4-stroke diesel
<b>Power Output Size</b>	SAE1/11.5"
<b>Bore x Stroke</b>	4.96 x 5.12 in 126 x 130mm
<b>Displacement</b>	594 cu in 9.726L
<b>Emission</b>	IMO II

### Commercial Ratings

Application	Model	kW	Genset power	rpm	Aspiration	Governor Type	Rating
MG/EG	WP10CD200E200	182	150	1500	TA	Mech/Elec	PRP
	WP10CD200E201	182	150	1800	TA	Mech/Elec	PRP
MG(CR)	WP10CD200E220	182	150	1500	TA	ECU	PRP
	WP10CD200E221	182	150	1800	TA	ECU	PRP
MG/EG	WP10CD238E200	216	180	1500	TA	Mech/Elec	PRP
	WP10CD238E201	216	180	1800	TA	Mech/Elec	PRP
MG(CR)	WP10CD238E220	216	180	1500	TA	ECU	PRP
	WP10CD238E221	216	180	1800	TA	ECU	PRP
MG/EG	WP10CD264E200	240	200	1500	TA	Mech/Elec	PRP
	WP10CD264E201	240	200	1800	TA	Mech/Elec	PRP
MG(CR)	WP10CD264E220	240	200	1500	TA	ECU	PRP
	WP10CD264E221	240	200	1800	TA	ECU	PRP

### Main Dimensions & Dry Weight

	L(mm/in)	W(mm/in)	H(mm/in)	Dry Weight (kg/lbs)
MG	1520/60	835/33	1056/42	1050/2315
MG(CR)	1482/58	981/39	1016/40	1082/2385
EG	2070/82	1040/41	1410/56	1100/2425

- Dimensions may vary based on selected engine configuration.
- The delivery date of model with\*should be negotiated specifically.

## Auxiliary Engines

# WD12



### General Specifications

<b>Configuration</b>	6 Cylinders, In line, 4-stroke diesel		
<b>Power Output Size</b>	SAE1/11.5"		
<b>Bore x Stroke</b>	4.96 x 6.10 in	126 x 155 mm	
<b>Displacement</b>	708 cu in	11.596L	
<b>Emission</b>	IMO II		

### Commercial Ratings

Application	Model	kW	Genset power	rpm	Aspiration	Governor Type	Rating
MG/EG	WP12CD317E200	288	250	1500	TA	Mech/Elec	PRP
	WP12CD317E201	288	250	1800	TA	Mech/Elec	PRP

### Main Dimensions & Dry Weight

	L(mm/in)	W(mm/in)	H(mm/in)	Dry Weight (kg/lbs)
MG	1494/59	840/33	1426/56	1100/2425
EG	2086/82	1080/43	1456/57	1150/2535

- Dimensions may vary based on selected engine configuration.
- The delivery date of model with\*should be negotiated specifically.

## Auxiliary Engines

# WP13



### General Specifications

<b>Configuration</b>	6 Cylinders, In line, 4-stroke diesel		
<b>Power Output Size</b>	SAE1/14"		
<b>Bore x Stroke</b>	5.0 x 6.5 in	127 x 165mm	
<b>Displacement</b>	765 cu in	12.54L	
<b>Emission</b>	IMO II		

### Commercial Ratings

Application	Model	kW	Genset power	rpm	Aspiration	Governor Type	Rating
MG(CR)	WP13CD319E220	290	250	1500	TA	ECU	PRP
	WP13CD340E220	310	280	1500	TA	ECU	PRP
MG/EG	WP13CD385E200	350	300	1500	TA	Mech/Elec	PRP
	WP13CD385E201	350	300	1800	TA	Mech/Elec	PRP
MG(CR)	WP13CD385E220	350	300	1500	TA	ECU	PRP
	WP13CD385E221	350	300	1800	TA	ECU	PRP

### Main Dimensions & Dry Weight

	L(mm/in)	W(mm/in)	H(mm/in)	Dry Weight (kg/lbs)
MG	1587/62	896/35	1373/54	1100/2425
MG(CR)	1581/62	840/33	1374/54	1100/2425
EG	2169/85	1134/45	1350/53	1350/2976

- Dimensions may vary based on selected engine configuration.
- The delivery date of model with\*should be negotiated specifically.

## Auxiliary Engines

# WP17T



### General Specifications

<b>Configuration</b>	6 Cylinders, in line, 4-stroke diesel
<b>Power Output Size</b>	SAE1/14"
<b>Bore x Stroke</b>	5.59x6.89 in 142 x 175mm
<b>Displacement</b>	1013 cu in 16.6L
<b>Emission</b>	IMO II

### Commercial Ratings

Application	Model	kW	Genset power	rpm	Aspiration	Governor Type	Rating
MG	WP17TCD484E220*	440	400	1500	TA	ECU	PRP
	WP17TCD528E220*	480	450	1800	TA	ECU	PRP

### Main Dimensions & Dry Weight

L(mm/in)	W(mm/in)	H(mm/in)	Dry Weight (kg/lbs)
1700/67	1030/41	1350/53	1690/3726

- Dimensions may vary based on selected engine configuration.
- The delivery date of model with\*should be negotiated specifically.

## Auxiliary Engines

# 6M33



### General Specifications

<b>Configuration</b>	6 Cylinders, in line, 4-stroke diesel
<b>Power Output Size</b>	SAE1/14"
<b>Bore x Stroke</b>	5.91x7.28 in 150x185mm
<b>Displacement</b>	1196 cu in 19.6L
<b>Emission</b>	IMO II

### Commercial Ratings

Application	Model	kW	Genset power	rpm	Aspiration	Governor Type	Rating
MG/EG	6M33CD447E200	406	360	1500	TA	Mech/Elec	PRP
	6M33CD447E201	406	360	1800	TA	Mech/Elec	PRP
MG(CR)	6M33CD447E210	406	360	1500	TA	ECU	PRP
	6M33CD484E200	440	400	1500	TA	Mech/Elec	PRP
MG/EG	6M33CD484E201	440	400	1800	TA	Mech/Elec	PRP
	6M33CD484E210	440	400	1500	TA	ECU	PRP
MG/EG	6M33CD550E200	500	450	1500	TA	Mech/Elec	PRP
	6M33CD550E210	500	450	1500	TA	ECU	PRP
MG/EG	6M33CD575E201	523	450	1800	TA	Mech/Elec	PRP
	6M33CD605E200	550	500	1500	TA	Elec	PRP
EG	6M33CD605E201	550	500	1800	TA	Elec	PRP
	6M33CD605E210	550	500	1500	TA	ECU	PRP
MG(CR)	6M33CD607E201	552	500	1800	TA	Mech/Elec	PRP
	6M33CD633E211	575	500	1800	TA	ECU	PRP

### Main Dimensions & Dry Weight

	L(mm/in)	W(mm/in)	H(mm/in)	Dry Weight (kg/lbs)
MG	1870/74	1000/39	1400/55	2390/5269
MG(CR)	1932/76	1026/40	1400/55	2432/5362
EG	2254/89	1138/45	1528/60	2090/4608

- Dimensions may vary based on selected engine configuration.
- The delivery date of model with\*should be negotiated specifically.

## Auxiliary Engines

# 12M33



### General Specifications

<b>Configuration</b>	12 Cylinders, V-type, 4-stroke diesel	
<b>Power Output Size</b>	SAE 0 / 18"	
<b>Bore x Stroke</b>	5.91×7.28 in	150×185mm
<b>Displacement</b>	2392 cu in	39.2L
<b>Emission</b>	IMO II	

### Commercial Ratings

Application	Model	kW	Genset power	rpm	Aspiration	Governor Type	Rating
MG	12M33CD638E200	580	500	1500	TA	Mech/Elec	PRP
MG/EG	12M33CD748E200	680	600	1500	TA	Mech/Elec	PRP
	12M33CD748E201	680	600	1800	TA	Mech/Elec	PRP
MG(CR)	12M33CD748E210	680	600	1500	TA	ECU	PRP
	12M33CD748E211	680	600	1800	TA	ECU	PRP
MG	12M33CD792E200	720	630	1500	TA	Mech/Elec	PRP
MG(CR)	12M33CD858E210	780	700	1500	TA	ECU	PRP
MG/EG	12M33CD902E200	820	700	1500	TA	Mech/Elec	PRP
	12M33CD902E201	820	700	1800	TA	Mech/Elec	PRP
	12M33CD968E200	880	800	1500	TA	Mech/Elec	PRP
	12M33CD968E201	880	810	1800	TA	Mech/Elec	PRP
MG(CR)	12M33CD968E210	880	800	1500	TA	ECU	PRP
MG/EG	12M33CD1100E200	1000	900	1500	TA	Mech/Elec	PRP
EG	12M33CD1100E201	1000	900	1800	TA	ELEC	PRP
MG(CR)	12M33CD1100E210	1000	900	1500	TA	ECU	PRP
MG	12M33CD1150E201	1045	900	1800	TA	Mech/Elec	PRP
EG	12M33CD1210E200	1100	1000	1500	TA	ELEC	PRP
	12M33CD1210E201	1100	1000	1800	TA	ELEC	PRP
MG(CR)	12M33CD1214E211	1104	1000	1800	TA	ECU	PRP

### Main Dimensions & Dry Weight

	L(mm/in)	W(mm/in)	H(mm/in)	Dry Weight (kg/lbs)
MG	2210/87	1418/56	1554/61	3900/8598
MG(CR)	2500/98	1420/56	1770/70	5030/11089
EG	2524/99	1312/52	1731/68	3590/7915

- Dimensions may vary based on selected engine configuration.
- The delivery date of model with\*should be negotiated specifically.

## Auxiliary Engines

# 16M33



### General Specifications

<b>Configuration</b>	16 Cylinders,4-stroke diesel
<b>Power Output size</b>	SAE00/21"
<b>Bore x Stroke</b>	5.91x7.28 in 150x185 mm
<b>Displacement</b>	3191.54 cu in 52.3L
<b>Emission</b>	IMO II

### Commercial Ratings

Application	Model	kW	Genset power	rpm	Aspiration	Governor Type	Rating
MG(CR)	16M33CD1331E210	1210	1100	1500	TA	ECU	PRP
	16M33CD1452E210	1320	1200	1500	TA	ECU	PRP
	16M33CD1452E211	1320	1200	1800	TA	ECU	PRP
	16M33CD1683E211	1530	1400	1800	TA	ECU	PRP

### Main Dimensions & Dry Weight

L(mm/in)	W(mm/in)	H(mm/in)	Dry Weight (kg/lbs)
2970/117	1400/55	1930/76	6200/13669

- Dimensions may vary based on selected engine configuration.
- The delivery date of model with\*should be negotiated specifically.

## Auxiliary Engines

# 12M55



### General Specifications

<b>Configuration</b>	12Cylinders,4-stroke diesel
<b>Power Output size</b>	SAE00/21"
<b>Bore x Stroke</b>	7.09x8.46 in 180x215 mm
<b>Displacement</b>	4006.21 cu in 65.65L
<b>Emission</b>	IMO II

### Commercial Ratings

Application	Model	kW	Genset power	rpm	Aspiration	Governor Type	Rating
MG(CR)	12M55CD1682E210	1529	1400	1500	TA	ECU	PRP
	12M55CD1805E210	1641	1500	1500	TA	ECU	PRP
	12M55CD1805E211	1641	1500	1800	TA	ECU	PRP
	12M55CD1936E210	1760	1600	1500	TA	ECU	PRP
	12M55CD2050E210	1864	1700	1500	TA	ECU	PRP
	12M55CD2184E210	1985	1800	1500	TA	ECU	PRP
	12M55CD2184E211	1985	1800	1800	TA	ECU	PRP
	12M55CD2420E211	2200	2000	1800	TA	ECU	PRP

### Main Dimensions & Dry Weight

L(mm/in)	W(mm/in)	H(mm/in)	Dry Weight (kg/lbs)
2927/115	1554/61	2297/90	10000/22046

- Dimensions may vary based on selected engine configuration.
- The delivery date of model with\*should be negotiated specifically.

## Auxiliary Engines

# X6170



### General Specifications

<b>Configuration</b>	6 Cylinders, in line, 4-stroke diesel
<b>Power Output Size</b>	SAE 0 / 18"
<b>Bore x Stroke</b>	6.69×7.87 in 170×200mm
<b>Displacement</b>	1662 cu in 27.24L
<b>Emission</b>	IMO II

### Commercial Ratings

Application	Model	kW	Genset power	rpm	Aspiration	Governor Type	Rating
MG	X6170ZCD280-1	280	250	1000	TA	Mech/Elec/ECU	COP
	X6170ZCD330-1	330	300	1000	TA	Mech/Elec/ECU	COP
	X6170ZCD350-2	350	300	1200	TA	ECU	COP
	X6170ZCD400-1	400	350	1000	TA	ECU	COP
	X6170ZCD440-1	440	400	1000	TA	Mech/Elec/ECU	COP
	X6170ZCD441-2	441	400	1200	TA	ECU	COP

### Main Dimensions & Dry Weight

L(mm/in)	W(mm/in)	H(mm/in)	Dry Weight (kg/lbs)
2463/97	1200/47	1650/65	3100/6834

- Dimensions may vary based on selected engine configuration.
- The delivery date of model with\*should be negotiated specifically.

## Auxiliary Engines

# 8170



### General Specifications

<b>Configuration</b>	8 Cylinders, in line, 4-stroke diesel		
<b>Power Output Size</b>	SAE 0 / 18"		
<b>Bore x Stroke</b>	6.69×7.87 in	170×200mm	
<b>Displacement</b>	2216 cu in	36.32L	
<b>Emission</b>	IMO II		

### Commercial Ratings

Application	Model	kW	Genset power	rpm	Aspiration	Governor Type	Rating
	8170ZCD441-1	441	400	1000	TA	Elec/ECU	COP
MG	8170ZCD490-1	490	450	1000	TA	ECU	COP
	8170ZCD570-1	570	500	1000	TA	Elec/ECU	COP

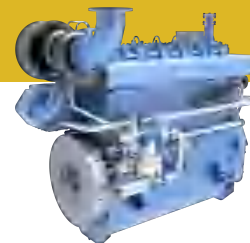
### Main Dimensions & Dry Weight

L(mm/in)	W(mm/in)	H(mm/in)	Dry Weight (kg/lbs)
2650/104	1044/41	1818/72	3800/8378

- Dimensions may vary based on selected engine configuration.
- The delivery date of model with\*should be negotiated specifically.

## Auxiliary Engines

# CW6200



### General Specifications

<b>Configuration</b>	6 Cylinders, in line, 4-stroke diesel		
<b>Bore x Stroke</b>	7.87 x 10.63 in	200 x 270mm	
<b>Displacement</b>	3105 cu in	50.89L	
<b>Emission</b>	IMO II		
<b>Rating</b>	COP		

### Commercial Ratings

Application	Model	kW	Genset power	rpm	Aspiration	Governor Type	Fuel
	CW6200ZD	600	500	1000	TA	Mech/Elec	MGO/MDO
MG	XCW6200ZD	698	600	1000	TA	Mech/Elec	MGO/MDO
	XCW6200ZD-10	810	700	1000	TA	Mech/Elec	MGO/MDO

### Main Dimensions & Dry Weight

L(mm/in)	W(mm/in)	H(mm/in)	Dry Weight (kg/lbs)
2828/111	1736/68	2412/95	6400-6500/14110-14330

- Dimensions may vary based on selected engine configuration.
- The delivery date of model with\*should be negotiated specifically.

## Auxiliary Engines

# CW12V200



### General Specifications

<b>Configuration</b>	12 Cylinders, V-type, 4-stroke diesel
<b>Bore x Stroke</b>	7.87 x 10.63 in 200 x 270mm
<b>Displacement</b>	6211 cu in 101.78L
<b>Emission</b>	IMO II
<b>Rating</b>	COP

### Commercial Ratings

Application	Model	kW	Genset power	rpm	Aspiration	Governor Type	Fuel
MG	XCW12V200ZD-1	1400	1200	1000	TA	Mech/Elec	MGO/MDO

### Main Dimensions & Dry Weight

L(mm/in)	W(mm/in)	H(mm/in)	Dry Weight (kg/lbs)
3953/156	1700/67	2600/102	10900/24030

- Dimensions may vary based on selected engine configuration.
- The delivery date of model with\*should be negotiated specifically.

## Auxiliary Engines

# CW16V200



### General Specifications

<b>Configuration</b>	16 Cylinders, V-type, 4-stroke diesel
<b>Bore x Stroke</b>	7.87 x 10.63 in 200 x 270 mm
<b>Displacement</b>	8280 cu in 135.68L
<b>Emission</b>	IMO II
<b>Rating</b>	COP

### Commercial Ratings

Application	Model	kW	Genset power	rpm	Aspiration	Governor Type	Fuel
MG	CW16V200ZD	1760	1500	1000	TA	Mech/Elec	MGO/MDO

### Main Dimensions & Dry Weight

L(mm/in)	W(mm/in)	H(mm/in)	Dry Weight (kg/lbs)
4603.5/181	1700/67	2745/108	13680/30159

- Dimensions may vary based on selected engine configuration.
- The delivery date of model with\*should be negotiated specifically.



## Auxiliary Engines

# CW6250



### General Specifications

<b>Configuration</b>	6 Cylinders, in line, 4-stroke diesel
<b>Bore x Stroke</b>	9.84 x 11.81 in 250 x 300mm
<b>Displacement</b>	5392 cu in 88.36L
<b>Emission</b>	IMO II
<b>Rating</b>	COP

### Commercial Ratings

Application	Model	kW	Genset power	rpm	Aspiration	Governor Type	Fuel
MG	CW6250ZLD	1470	1200	1000	TA	Mech/Elec	MGO/MDO

### Main Dimensions & Dry Weight

L(mm/in)	W(mm/in)	H(mm/in)	Dry Weight (kg/lbs)
3816/150	1369/54	2457/97	12000/26455

- Dimensions may vary based on selected engine configuration.
- The delivery date of model with\*should be negotiated specifically.

## Auxiliary Engines

# 6WH17



### General Specifications

<b>Configuration</b>	6 Cylinders,4-stroke diesel
<b>Power Output size</b>	SAE0/18"
<b>Bore x Stroke</b>	6.69x8.74 in 170x222 mm
<b>Displacement</b>	1884 cu in 30.22L
<b>Emission</b>	IMO II

### Commercial Ratings

Application	Model	kW	Genset power	rpm	Aspiration	Governor Type	Rating
MG(CR)	6WH17CD539-1	490	450	1000	TA	ECU	COP
	6WH17CD638-2	580	500	1200	TA	ECU	COP
	6WH17CD660-5	600	550	1500	TA	ECU	COP
	6WH17CD809-5	735	600	1500	TA	ECU	COP

### Main Dimensions & Dry Weight

L(mm/in)	W(mm/in)	H(mm/in)	Dry Weight (kg/lbs)
2355/93	1210/48	1615/64	3500/7716

- Dimensions may vary based on selected engine configuration.
- The delivery date of model with\*should be negotiated specifically.

## Auxiliary Engines

# 8WH17



### General Specifications

<b>Configuration</b>	8Cylinders,4-stroke diesel
<b>Power Output size</b>	SAE0/18"
<b>Bore x Stroke</b>	6.69x8.74 in 170x222 mm
<b>Displacement</b>	2459.7 cu in 40.31L
<b>Emission</b>	IMO II

### Commercial Ratings

Application	Model	kW	Genset power	rpm	Aspiration	Governor Type	Rating
MG(CR)	8WH17CD726-1*	660	600	1000	TA	ECU	COP
	8WH17CD770-1*	700	600	1000	TA	ECU	COP
	8WH17CD858-2*	780	700	1200	TA	ECU	COP
	8WH17CD1078-5*	980	850	1500	TA	ECU	COP

### Main Dimensions & Dry Weight

L(mm/in)	W(mm/in)	H(mm/in)	Dry Weight (kg/lbs)
2985/118	1130/44	1830/72	4600/10141

- Dimensions may vary based on selected engine configuration.
- The delivery date of model with\*should be negotiated specifically.

## Auxiliary Engines

# 12WH17



### General Specifications

<b>Configuration</b>	12 Cylinders,4-stroke diesel
<b>Power Output size</b>	SAE0/18"
<b>Bore x Stroke</b>	6.69x7.87 in 170x220 mm
<b>Displacement</b>	3324.57 cu in 54.48L
<b>Emission</b>	IMO II

### Commercial Ratings

Application	Model	kW	Genset power	rpm	Aspiration	Governor Type	Rating
MG(CR)	12WH17CD990-1	900	800	1000	TA	ECU	COP
	12WH17CD1210-2	1100	1000	1200	TA	ECU	COP
	12WH17CD1265-5	1150	1000	1500	TA	ECU	COP
	12WH17CD1485-5	1350	1200	1500	TA	ECU	COP
	12WH17CD1595-5	1450	1300	1500	TA	ECU	COP

### Main Dimensions & Dry Weight

L(mm/in)	W(mm/in)	H(mm/in)	Dry Weight (kg/lbs)
2589/102	1522/60	1988/78	5600/12346

- Dimensions may vary based on selected engine configuration.
- The delivery date of model with\*should be negotiated specifically.

## Auxiliary Engines

# 6WH20



### General Specifications

<b>Configuration</b>	6 Cylinders, in line, 4-stroke diesel
<b>Bore x Stroke</b>	9.06×11.81 in 200×300mm
<b>Displacement</b>	3451 cu in 56.55L
<b>Emission</b>	IMO II
<b>Rating</b>	COP

### Commercial Ratings

Application	Model	kW	Genset power	rpm	Aspiration	Governor Type	Fuel
	6WH20LCD700-7.5*	700	600	750	TA	Mech/Elec	MGO/MDO/HFO
	6WH20LCD800-7.2*	800	700	720	TA	Mech/Elec	MGO/MDO
	6WH20LCD825-7.5*	825	700	750	TA	Mech/Elec	MGO/MDO
MG	6WH20LCD900-7.5*	900	800	750	TA	Mech/Elec	MGO/MDO/HFO
	6WH20LCD1000-9*	1000	900	900	TA	Mech/Elec	MGO/MDO
	6WH20LCD1000-1*	1000	900	1000	TA	Mech/Elec	MGO/MDO
	6WH20LCD1200-1*	1200	1100	1000	TA	Mech/Elec	MGO/MDO/HFO

### Main Dimensions & Dry Weight

L(mm/in)	W(mm/in)	H(mm/in)	Dry Weight (kg/lbs)
3532/139	1365/54	2642/104	9800/21605

- Dimensions may vary based on selected engine configuration.
- The delivery date of model with\*should be negotiated specifically.

## Auxiliary Engines

# 6WH28



### General Specifications

<b>Configuration</b>	6 Cylinders, in line, 4-stroke diesel
<b>Bore x Stroke</b>	11.02×16.14 in 280×410mm
<b>Displacement</b>	9245.11 cu in 151.5L
<b>Emission</b>	IMO II
<b>Rating</b>	COP

### Commercial Ratings

Application	Model	kW	Genset power	rpm	Aspiration	Governor Type	Fuel
	6WH28CD2245-7.2* 2040	1930	1930	720	TA	Elec	MGO/MDO/HFO
	6WH28CD2245-7.5* 2040	1930	1930	750	TA	Elec	MGO/MDO/HFO
MG	6WH28CD2465-7.2* 2240	2120	2120	720	TA	Elec	MGO/MDO/HFO
	6WH28CD2465-7.5* 2240	2120	2120	750	TA	Elec	MGO/MDO/HFO
	6WH28CD2706-7.5* 2460	2330	2330	750	TA	Elec	MGO/MDO/HFO

### Main Dimensions & Dry Weight

L(mm/in)	W(mm/in)	H(mm/in)	Dry Weight (kg/lbs)
5068/200	1967/77	3510/138	24000/52911

- Dimensions may vary based on selected engine configuration.
- The delivery date of model with\*should be negotiated specifically.

## Auxiliary Engines

# 8WH28



### General Specifications

<b>Configuration</b>	8 Cylinders, in line, 4-stroke diesel
<b>Bore x Stroke</b>	11.03×16.15 in 280×410mm
<b>Displacement</b>	12327.3 cu in 202L
<b>Emission</b>	IMO II
<b>Rating</b>	COP

### Commercial Ratings

Application	Model	kW	Genset power	rpm	Aspiration	Governor Type	Fuel
	8WH28CD2992-7.2*	2720	2580	720	TA	Elec	MGO/MDO/HFO
	8WH28CD2992-7.5*	2720	2580	750	TA	Elec	MGO/MDO/HFO
MG	8WH28CD3300-7.2*	3000	2850	720	TA	Elec	MGO/MDO/HFO
	8WH28CD3300-7.5*	3000	2850	750	TA	Elec	MGO/MDO/HFO
	8WH28CD3476-7.5*	3160	3000	750	TA	Elec	MGO/MDO/HFO

### Main Dimensions & Dry Weight

L(mm/in)	W(mm/in)	H(mm/in)	Dry Weight (kg/lbs)
5949/234	1967/78	3510/138	29000/63800

- Dimensions may vary based on selected engine configuration.
- The delivery date of model with\*should be negotiated specifically.

## Auxiliary Engines

# WP4



### General Specifications

<b>Configuration</b>	4Cylinders,4-stroke diesel
<b>Power output Size</b>	SAE3/11.5'
<b>Bore x Stroke</b>	4.13x5.12 in 105x130 mm
<b>Displacement</b>	275 cu in 4.5L
<b>Emission</b>	NR

### Commercial Ratings

Application	Model	kW	Genset power	rpm	Aspiration	Governor Type	Rating
MG(GAS)	WP4CD30E200NG	30	24	1500	NA	ECU	PRP
	WP4CD35E200NG	35	30	1500	NA	ECU	PRP

### Main Dimensions & Dry Weight

L(mm/in)	W(mm/in)	H(mm/in)	Dry Weight (kg/lbs)
1021/40	750/30	1056/42	560/1235

- Dimensions may vary based on selected engine configuration.
- The delivery date of model with\*should be negotiated specifically.

## Auxiliary Engines

# WP6



### General Specifications

<b>Configuration</b>	6 Cylinders,4-stroke diesel
<b>Power output Size</b>	SAE1/11.5"
<b>Bore x Stroke</b>	4.13x5.12 in 105x130 mm
<b>Displacement</b>	412 cu in 6.75L
<b>Emission</b>	NR

### Commercial Ratings

Application	Model	kW	Genset power	rpm	Aspiration	Governor Type	Fuel
	WP6CD60E200NG	60	50	1500	TA	ECU	PRP
MG(GAS)	WP6CD90E200NG	90	64/75	1500	TA	ECU	PRP
	WP6CD120E200NG	120	90/100	1500	TA	ECU	PRP

### Main Dimensions & Dry Weight

L(mm/in)	W(mm/in)	H(mm/in)	Dry Weight (kg/lbs)
1370/54	820/32	1163/46	650/1433

- Dimensions may vary based on selected engine configuration.
- The delivery date of model with\*should be negotiated specifically.

## Auxiliary Engines

# WP13



### General Specifications

<b>Configuration</b>	6Cylinders,4-stroke diesel
<b>Power output Size</b>	SAE1/14"
<b>Bore x Stroke</b>	5.0 x 6.5 in 127 x 165 mm
<b>Displacement</b>	765 cu in 12.54L
<b>Emission</b>	IMO II

### Commercial Ratings

Application	Model	kW	Genset power	rpm	Aspiration	Governor Type	Rating
	WP13CD220E220NG* 200	150	150	1500	TA	ECU	PRP
MG(GAS)	WP13CD275E220NG* 250	200	200	1500	TA	ECU	PRP
	WP13CD275E221NG* 250	200	200	1800	TA	ECU	PRP

### Main Dimensions & Dry Weight

L(mm/in)	W(mm/in)	H(mm/in)	Dry Weight (kg/lbs)
1582/62	782/31	1384/54	1050/2315

- Dimensions may vary based on selected engine configuration.
- The delivery date of model with\*should be negotiated specifically.

# Auxiliary Engines

## 6M33



### General Specifications

<b>Configuration</b>	6 Cylinders, 4-stroke diesel
<b>Power output Size</b>	SAE1/14"
<b>Bore x Stroke</b>	5.91x7.28 in 150x180 mm
<b>Displacement</b>	1196 cu in 19.6L
<b>Emission</b>	IMO II

### Commercial Ratings

Application	Model	kW	Genset power	rpm	Aspiration	Governor Type	Fuel
MG(GAS)	6M33CD330E220NG	300	250	1500	TA	ECU	PRP
	6M33CD385E220NG	350	300	1500	TA	ECU	PRP
	6M33CD440E220NG	400	350	1500	TA	ECU	PRP
	6M33CD495E221NG	450	400	1800	TA	ECU	PRP

### Main Dimensions & Dry Weight

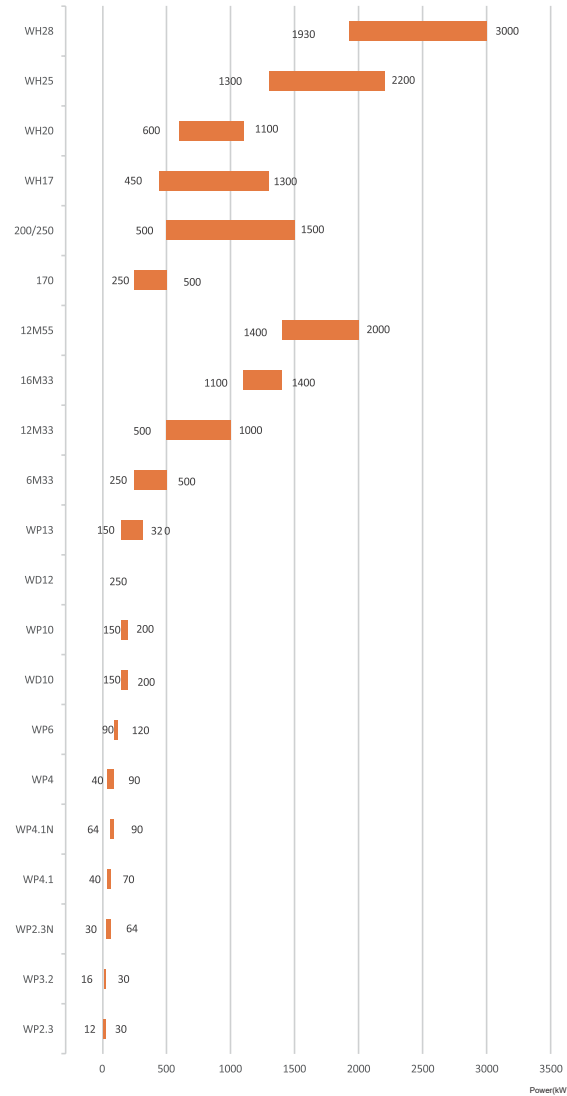
L(mm/in)	W(mm/in)	H(mm/in)	Dry Weight (kg/lbs)
1870/74	1000/39	1600/63	2390/5269

- Dimensions may vary based on selected engine configuration.
- The delivery date of model with\*should be negotiated specifically.



## GENERATOR SETS

- High efficiency alternators
- Best in class fuel consumption
- Reliability in the most extreme conditions
- Mechanical injection engines simplify maintenance



# Generator Sets

## 2.3L-4.1L



### Commercial Ratings

Engine Series	Set Model	Power KW	Frequency Hz	rpm	Rating
WP2.3	CCFJ12J-W#	12	50	1500	PRP
	CCFJ16J-W#	16	50	1500	PRP
	CCFJ20J-W#	20	50	1500	PRP
	CCFJ24J-W#	24	50	1500	PRP
	CCFJ30J-W#	30	50	1500	PRP
	CCFJ20J-W#	20	60	1800	PRP
WP3.2	CCFJ30J-W#	30	60	1800	PRP
	CCFJ16J-W#	16	50	1500	PRP
	CCFJ20J-W#	20	50	1500	PRP
	CCFJ24J-W#	24	50	1500	PRP
	CCFJ20J-W#	20	60	1800	PRP
	CCFJ24J-W#	24	60	1800	PRP
WP2.3N	CCFJ30J-W#	30	60	1800	PRP
	CCFJ30J-W#	30	50	1500	PRP
	CCFJ40J-W#	40	50	1500	PRP
	CCFJ50J-W#	50	50	1500	PRP
WP4.1	CCFJ64J-W#	64	60	1800	PRP
	CCFJ40J-W#	40	50	1500	PRP
	CCFJ50J-W#	50	50	1500	PRP
	CCFJ60J-W#	60	50	1500	PRP
	CCFJ64J-W#	64	50	1500	PRP
	CCFJ40J-W#	40	60	1800	PRP
	CCFJ50J-W#	50	60	1800	PRP
	CCFJ60J-W#	60	60	1800	PRP
	CCFJ64J-W#	64	60	1800	PRP
	CCFJ70J-W#	70	60	1800	PRP
WP4.1N	CCFJ64J-W#	64	50	1500	PRP
	CCFJ75J-W#	75	50	1500	PRP
	CCFJ90J-W#	90	60	1800	PRP

- Dimensions may vary based on selected engine configuration.
- The model with # means that the generator supplier is optional.

## Generator Sets

# 2.3L-4.1L



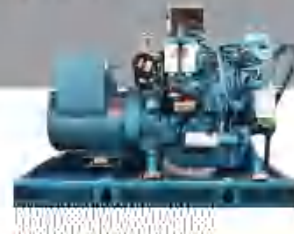
### Main Dimensions & Dry Weight

Engine Series	Set Model	L(mm/in)	W(mm/in)	H(mm/in)	Weight (kg/lbs)
WP2.3	CCFJ12J-W#	1400/55	760/30	1050/41	470/1036
	CCFJ16J-W#				
	CCFJ20J-W#				
	CCFJ24J-W#				
	CCFJ30J-W#				
WP3.2	CCFJ16J-W#	1470/58	695/27	1020/40	580/1279
	CCFJ20J-W#				600/1323
	CCFJ24J-W#				615/1356
	CCFJ30J-W#				615/1356
WP2.3N	CCFJ30J-W#	1580/62	835/33	1040/41	660/1455
	CCFJ40J-W#				690/1521
	CCFJ50J-W#				725/1598
WP4.1	CCFJ64J-W#	1543/61	936/37	1122/44	775/1709
	CCFJ40J-W#				780/1719
	CCFJ50J-W#				835/1841
	CCFJ60J-W#				880/1940
	CCFJ64J-W#				880/1940
WP4.1N	CCFJ70J-W#	1760/69	905/36	1100/43	885/1951
	CCFJ64J-W#				1015/2238
	CCFJ75J-W#				1075/2370
	CCFJ90J-W#				1125/2480

- Dimensions may vary based on selected engine configuration.
- The model with # means that the generator supplier is optional.

## Generator Sets

# WP4



### Commercial Ratings

Engine Series	Set Model	Power KW	Frequency Hz	rpm	Rating
WP4	CCFJ40J-W#	40	50	1500	PRP
	CCFJ50J-W#	50	50	1500	PRP
	CCFJ64J-W#	64	50	1500	PRP
	CCFJ75J-W#	75	50	1500	PRP
	CCFJ40J-W#	40	60	1800	PRP
	CCFJ50J-W#	50	60	1800	PRP
	CCFJ64J-W#	64	60	1800	PRP
	CCFJ75J-W#	75	60	1800	PRP
	CCFJ90J-W#	90	60	1800	PRP

### Main Dimensions & Dry Weight

Engine Series	Set Model	L(mm/in)	W(mm/in)	H(mm/in)	Weight (kg/lbs)
WP4	CCFJ40J-W#	1722/68	954/38	1212/48	1000/2205
	CCFJ50J-W#				1050/2315
	CCFJ64J-W#				1270/2800
	CCFJ75J-W#				1315/2899
	CCFJ90J-W#				1445/3186

- Dimensions may vary based on selected engine configuration.
- The model with # means that the generator supplier is optional.



## Generator Sets

# WP6



### Commercial Ratings

Engine Series	Set Model	Power KW	Frequency Hz	rpm	Rating
WP6	CCFJ90J-W#	90	50	1500	PRP
	CCFJ100J-W#	100	50	1500	PRP
	CCFJ120J-W#	120	50	1500	PRP
	CCFJ100J-W#	100	60	1800	PRP
	CCFJ120J-W#	120	60	1800	PRP

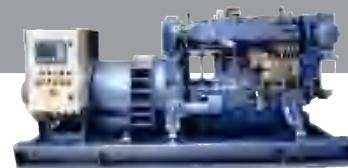
### Main Dimensions & Dry Weight

Engine Series	Set Model	L(mm/in)	W(mm/in)	H(mm/in)	Weight (kg/lbs)
WP6	CCFJ90J-W#				1450/3197
	CCFJ100J-W#	2270/89	1051/41	1331/52	1450/3197
	CCFJ120J-W#				1520/3351

- Dimensions may vary based on selected engine configuration.
- The model with # means that the generator supplier is optional.

## Generator Sets

# WP10



### Commercial Ratings

Engine Series	Set Model	Power KW	Frequency Hz	rpm	Rating
WP10	CCFJ150J-W#	150	50	1500	PRP
	CCFJ180J-W#	180	50	1500	PRP
	CCFJ200J-W#	200	50	1500	PRP
	CCFJ150J-W#	150	60	1800	PRP
	CCFJ180J-W#	180	60	1800	PRP
	CCFJ200J-W#	200	60	1800	PRP

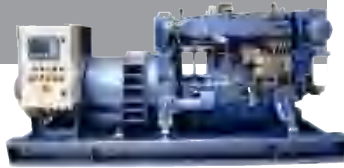
### Main Dimensions & Dry Weight

Engine Series	Set Model	L(mm/in)	W(mm/in)	H(mm/in)	Weight (kg/lbs)
WP10	CCFJ150J-W#				2100/4630
	CCFJ180J-W#	2632/104	1123/44	1582/62	2140/4718
	CCFJ200J-W#				2180/4807
WP10(CR)	CCFJ150J-W#	2480/98			2150/4740
	CCFJ180J-W#	2590/102	1930/76	1285/51	2190/4828
	CCFJ200J-W#	2590/102			2190/4828

- Dimensions may vary based on selected engine configuration.
- The model with # means that the generator supplier is optional.

## Generator Sets

# WD12



### Commercial Ratings

Engine Series	Set Model	Power KW	Frequency Hz	rpm	Rating
WD12	CCFJ250J-W#	250	50	1500	PRP
	CCFJ250J-W#	250	60	1800	PRP

### Main Dimensions & Dry Weight

Engine Series	Set Model	L(mm/in)	W(mm/in)	H(mm/in)	Weight (kg/lbs)
WD12	CCFJ250J-W#	2563/101	1123/44	1638/64	2510/5533

- Dimensions may vary based on selected engine configuration.
- The model with # means that the generator supplier is optional.

## Generator Sets

# WP13



### Commercial Ratings

Engine Series	Set Model	Power KW	Frequency Hz	rpm	Rating
WP13	CCFJ250J-W#	250	50	1500	PRP
	CCFJ280J-W#	280	50	1500	PRP
	CCFJ300J-W#	300	50	1500	PRP
	CCFJ300J-W#	300	60	1800	PRP

### Main Dimensions & Dry Weight

Engine Series	Set Model	L(mm/in)	W(mm/in)	H(mm/in)	Weight (kg/lbs)
WP13	CCFJ250J-W#	2621/103	1122/44	1542/61	2590/5710
	CCFJ280J-W#	2691/106	1122/44	1542/61	2643/5827
	CCFJ300J-W#	2691/106	1122/44	1542/61	2693/5937

- Dimensions may vary based on selected engine configuration.
- The model with # means that the generator supplier is optional.

## Generator Sets

# 6M33



### Commercial Ratings

Engine Series	Set Model	Power KW	Frequency Hz	rpm	Rating
6M33	CCFJ360J-W#	360	50	1500	PRP
	CCFJ400J-W#	400	50	1500	PRP
	CCFJ450J-W#	450	50	1500	PRP
	CCFJ500J-W#	500	50	1500	PRP
	CCFJ360J-W#	360	60	1800	PRP
	CCFJ400J-W#	400	60	1800	PRP
	CCFJ450J-W#	450	60	1800	PRP
	CCFJ500J-W#	500	60	1800	PRP

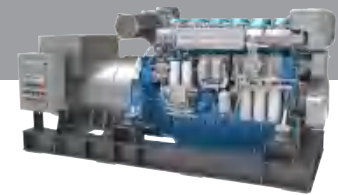
### Main Dimensions & Dry Weight

Engine Series	Set Model	L(mm/in)	W(mm/in)	H(mm/in)	Weight (kg/lbs)
6M33	CCFJ360J-W#	3072/121	1389/55	1611/63	4400/9700
	CCFJ400J-W#	3092/122	1389/55	1611/63	4450/9811
	CCFJ450J-W#	3202/126	1564/62	1611/63	5500/12125
	CCFJ500J-W#	3586/141	1564/62	1611/63	5700/12566

- Dimensions may vary based on selected engine configuration.
- The model with # means that the generator supplier is optional.

## Generator Sets

# 12M33



### Commercial Ratings

Engine Series	Set Model	Power KW	Frequency Hz	rpm	Rating
12M33	CCFJ500J-W#	500	50	1500	PRP
	CCFJ600J-W#	600	50	1500	PRP
	CCFJ700J-W#	700	50	1500	PRP
	CCFJ800J-W#	800	50	1500	PRP
	CCFJ900J-W#	900	50	1500	PRP
	CCFJ1000J-W#	1000	50	1500	PRP
	CCFJ500J-W#	500	60	1800	PRP
	CCFJ600J-W#	600	60	1800	PRP
	CCFJ700J-W#	700	60	1800	PRP
	CCFJ800J-W#	800	60	1800	PRP
	CCFJ900J-W#	900	60	1800	PRP
	CCFJ1000J-W#	1000	60	1800	PRP

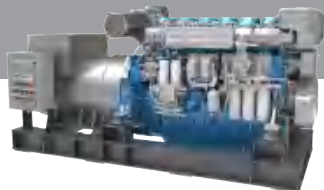
### Main Dimensions & Dry Weight

Engine Series	Set Model	L(mm/in)	W(mm/in)	H(mm/in)	Weight (kg/lbs)
12M33	CCFJ500J-W#	3600/142	1833/72	2195/86	8250/18188
	CCFJ600J-W#	3900/154	1833/72	2195/86	8450/18629
	CCFJ700J-W#	4200/165	1833/72	2195/86	8800/19400
	CCFJ800J-W#	4300/169	1833/72	1600/63	9100/20062
	CCFJ900J-W#	4470/176	1833/72	1600/63	9200/20283
	CCFJ1000J-W#	4470/176	1833/72	1600/63	9200/20283

- Dimensions may vary based on selected engine configuration.
- The model with # means that the generator supplier is optional.

## Generator Sets

# 16M33



### Commercial Ratings

Engine Series	Set Model	Power KW	Frequency Hz	rpm	Rating
16M33	CCFJ1100J-W#	1100	50	1500	PRP
	CCFJ1200J-W#	1200	50	1500	PRP
	CCFJ1200J-W#	1200	60	1800	PRP
	CCFJ1400J-W#	1400	60	1800	PRP

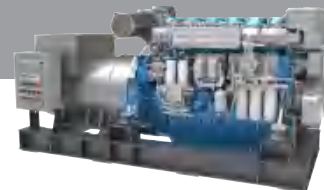
### Main Dimensions & Dry Weight

Engine Series	Set Model	L(mm/in)	W(mm/in)	H(mm/in)	Weight (kg/lbs)
16M33	CCFJ1100J-W#				12600/27778
	CCFJ1200J-W#	4900/193	1605/63	2190/86	13100/28881
	CCFJ1400J-W#				13400/29542

- Dimensions may vary based on selected engine configuration.
- The model with # means that the generator supplier is optional.

## Generator Sets

# 12M55



### Commercial Ratings

Engine Series	Set Model	Power KW	Frequency Hz	rpm	Rating
12M55	CCFJ1400J-W#	1400	50	1500	PRP
	CCFJ1500J-W#	1500	50	1500	PRP
	CCFJ1600J-W#	1600	50	1500	PRP
	CCFJ1700J-W#	1700	50	1500	PRP
	CCFJ1800J-W#	1800	50	1500	PRP
	CCFJ1500J-W#	1500	60	1800	PRP
	CCFJ1800J-W#	1800	60	1800	PRP
	CCFJ2000J-W#	2000	60	1800	PRP

### Main Dimensions & Dry Weight

Engine Series	Set Model	L(mm/in)	W(mm/in)	H(mm/in)	Weight (kg/lbs)
12M55	CCFJ1400J-W#	4900/193	1700/67	2620/103	19400/42770
	CCFJ1500J-W#	5100/201	1700/67	2620/103	19400/42770
	CCFJ1600J-W#	5300/209	1700/67	2620/103	20400/44974
	CCFJ1700J-W#	5300/209	1700/67	2620/103	20400/44974
	CCFJ1800J-W#	5560/219	1700/67	2620/103	20900/46077
	CCFJ1800J-W#	5560/219	1700/67	2620/103	20900/46077
	CCFJ2000J-W#	5600/220	1700/67	2620/103	21900/48281

- Dimensions may vary based on selected engine configuration.
- The model with # means that the generator supplier is optional.

# Generator Sets

# 170



## Commercial Ratings

Engine Series	Set Model	Power KW	Frequency Hz	rpm	Rating
6170	CCFJ250J-W#	250	50	1000	COP
	CCFJ300J-W#	300	50	1000	COP
	CCFJ350J-W#	350	50	1000	COP
	CCFJ400J-W#	400	50	1000	COP
	CCFJ300J-W#	300	60	1200	COP
	CCFJ400J-W#	400	60	1200	COP
8170	CCFJ400J-W#	400	50	1000	COP
	CCFJ450J-W#	450	50	1000	COP
	CCFJ500J-W#	500	50	1000	COP

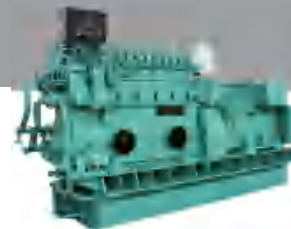
## Main Dimensions & Dry Weight

Engine Series	Set Model	L(mm/in)	W(mm/in)	H(mm/in)	Weight (kg/lbs)
6170	CCFJ250J-W#				
	CCFJ300J-W#				
	CCFJ350J-W#	3296/130	1376/54	1889/74	5200/11464
	CCFJ400J-W#				
8170	CCFJ400J-W#				
	CCFJ450J-W#	3936/155	1380/54	2219/87	7050/15543
	CCFJ500J-W#				

- Dimensions may vary based on selected engine configuration.
- The model with # means that the generator supplier is optional.

# Generator Sets

# 200/250



## Commercial Ratings

Engine Series	Set Model	Power KW	Frequency Hz	rpm	Rating
CW6200	CCFJ500J-WM#	500	50	1000	COP
	CCFJ600J-WM#	600	50	1000	COP
	CCFJ700J-WM#	700	50	1000	COP
CW12V200	CCFJ1200J-WM#	1200	50	1000	COP
CW16V200	CCFJ1500J-WM#	1500	50	1000	COP
CW6250	CCFJ1200J-WM#	1250	50	1000	COP

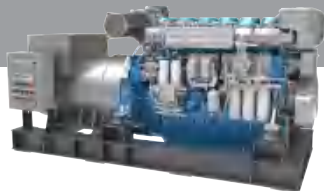
## Main Dimensions & Dry Weight

Engine Series	Set Model	L(mm/in)	W(mm/in)	H(mm/in)	Weight (kg/lbs)
CW6200	CCFJ500J-WM#	4550/179	1800/71	2450/96	11500/25353
	CCFJ600J-WM#	4600/181	1800/71	2450/96	12000/26455
	CCFJ700J-WM#	4600/181	1800/71	2450/96	12500/27558
CW12V200	CCFJ1200J-WM#	5400/213	2000/79	3000/118	20000/44092
CW16V200	CCFJ1500J-WM#	6500/256	2000/79	3000/118	25000/55116
CW6250	CCFJ1200J-WM#	6150/242	2000/79	3100/122	24150/53242

- Dimensions may vary based on selected engine configuration.
- The model with # means that the generator supplier is optional.

# Generator Sets

## WH17



### Commercial Ratings

Engine Series	Set Model	Power KW	Frequency Hz	rpm	Rating
6WH17	CCFJ450J-W#	450	50	1000	COP
	CCFJ550J-W#	550	50	1500	COP
	CCFJ600J-W#	600	50	1500	COP
	CCFJ500J-W#	500	60	1200	COP
8WH17	CCFJ600J-W#	600	50	1000	COP
	CCFJ850J-W#	850	50	1500	COP
	CCFJ700J-W#	700	60	1200	COP
12WH17	CCFJ800J-W#	800	50	1000	COP
	CCFJ1000J-W#	1000	50	1500	COP
	CCFJ1200J-W#	1200	50	1500	COP
	CCFJ1300J-W#	1300	50	1500	COP
	CCFJ1000J-W#	1000	60	1200	COP

### Main Dimensions & Dry Weight

Engine Series	Set Model	L(mm/in)	W(mm/in)	H(mm/in)	Weight (kg/lbs)
6WH17	CCFJ450J-W#	3997/157	1627/64	1765/69	7080/15609
	CCFJ500J-W#	3997/157	1627/64	1765/69	8080/17813
	CCFJ550J-W#	3997/157	1627/64	1765/69	8280/18254
	CCFJ600J-W#	3997/157	1627/64	1765/69	8280/18254
8WH17	CCFJ600J-W#	4746/187	1627/64	1830/72	8480/18695
	CCFJ700J-W#	4955/195	1627/64	1830/72	9380/20679
	CCFJ850J-W#	4675/184	1627/64	1830/72	9380/20679
12WH17	CCFJ800J-W#	4521/178	1800/71	2266/89	10200/22487
	CCFJ1000J-W#	4521/178	1800/71	2266/89	11600/25574
	CCFJ1200J-W#	4521/178	1800/71	2266/89	11650/25684
	CCFJ1300J-W#	4521/178	1800/71	2266/89	11950/26345

- Dimensions may vary based on selected engine configuration.
- The model with # means that the generator supplier is optional.

# Generator Sets

## WH20



### Commercial Ratings

Engine Series	Set Model	Power KW	Frequency Hz	rpm	Rating
6WH20	CCFJ600J-WM#	600	50	750	COP
	CCFJ700J-WM#	700	50	750	COP
	CCFJ800J-WM#	800	50	750	COP
	CCFJ900J-WM#	900	50	1000	COP
	CCFJ1100J-WM#	1100	50	1000	COP
	CCFJ700J-WM#	700	60	725	COP
	CCFJ900J-WM#	900	60	900	COP

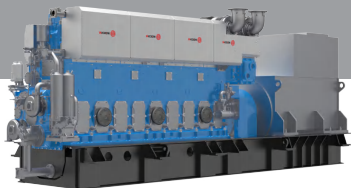
### Main Dimensions & Dry Weight

Engine Series	Set Model	L(mm/in)	W(mm/in)	H(mm/in)	Weight (kg/lbs)
6WH20	CCFJ600J-WM#	5947/234	1600/63	2616/103	16500/36376
	CCFJ700J-WM#	5947/234	1600/63	2616/103	16700/36817
	CCFJ800J-WM#	5947/234	1600/63	2616/103	16850/37148
	CCFJ900J-WM#	5947/234	1600/63	2616/103	16500/36376
	CCFJ1100J-WM#	5947/234	1600/63	2616/103	17200/37920

- Dimensions may vary based on selected engine configuration.
- The model with # means that the generator supplier is optional.

# Generator Sets

## WH25



### Commercial Ratings

Engine Series	Set Model	Power KW	Frequency Hz	rpm	Rating
6WH25	CCFJ1300J-WM#	1300	50	750	COP
	CCFJ1500J-WM#	1500	50	1000	COP
	CCFJ1600J-WM#	1600	50	1000	COP
8WH25	CCFJ1800J-WM#	1800	50	750	COP
	CCFJ1800J-WM#	1800	50	1000	COP
	CCFJ2000J-WM#	2000	50	1000	COP
	CCFJ2200J-WM#	2200	50	1000	COP

### Main Dimensions & Dry Weight

Engine Series	Set Model	L(mm/in)	W(mm/in)	H(mm/in)	Weight (kg/lbs)
6WH25	CCFJ1300J-WM#	6680/263	2100/83	3021/119	31500/69446
	CCFJ1500J-WM#	6900/272	2100/83	3021/119	32500/71650
	CCFJ1600J-WM#	6900/272	2100/83	3021/119	32500/71650
8WH25	CCFJ1800J-WM#	7683/302	2300/91	3021/119	36500/80469
	CCFJ2000J-WM#	7973/314	2520/99	3021/119	39000/85980
	CCFJ2200J-WM#	7973/314	2520/99	3021/119	39000/85980

- Dimensions may vary based on selected engine configuration.
- The model with # means that the generator supplier is optional.

# Generator Sets

## WH28



### Commercial Ratings

Engine Series	Set Model	Power KW	Frequency Hz	rpm	Rating
6WH28	CCFJ1930J-WM#	1930	50	750	COP
	CCFJ2120J-WM#	2120	50	750	COP
	CCFJ2330J-WM#	2330	50	750	COP
	CCFJ1930J-WM#	1930	60	720	COP
	CCFJ2120J-WM#	2120	60	720	COP
8WH28	CCFJ2580J-WM#	2580	50	750	COP
	CCFJ2850J-WM#	2850	50	750	COP
	CCFJ3000J-WM#	3000	50	750	COP
	CCFJ2580J-WM#	2580	60	720	COP
	CCFJ2850J-WM#	2850	60	720	COP

### Main Dimensions & Dry Weight

Engine Series	Set Model	L(mm/in)	W(mm/in)	H(mm/in)	Weight (kg/lbs)
6WH28	CCFJ1930J-WM#	9397/370	2126/84	3484/137	44500/98106
	CCFJ2120J-WM#	9397/370	2126/84	3484/137	44500/98106
	CCFJ2330J-WM#	9397/370	2126/84	3484/137	44500/98106
8WH28	CCFJ2580J-WM#	10278/405	2126/84	3484/137	53500/117947
	CCFJ2850J-WM#	10278/405	2126/84	3484/137	53500/117947
	CCFJ3000J-WM#	10278/405	2126/84	3484/137	53500/117947

- Dimensions may vary based on selected engine configuration.
- The model with # means that the generator supplier is optional.

# Generator Sets

## Emergency Generator Sets



# Generator Sets

## Emergency Generator Sets



### Commercial Ratings

Engine Series	Set Model	Power KW	Frequency Hz	rpm
WP2.3	CCFJ12Y-W#	12	50	1500
	CCFJ16Y-W#	16	50	1500
	CCFJ20Y-W#	20	50	1500
	CCFJ24Y-W#	24	50	1500
	CCFJ30Y-W#	30	50	1500
	CCFJ20Y-W#	20	60	1800
	CCFJ30Y-W#	30	60	1800
WP4	CCFJ40Y-W#	40	50	1500
	CCFJ50Y-W#	50	50	1500
	CCFJ60Y-W#	60	50	1500
	CCFJ64Y-W#	64	50	1500
	CCFJ75Y-W#	75	50	1500
	CCFJ40Y-W#	40	60	1800
	CCFJ50Y-W#	50	60	1800
	CCFJ60Y-W#	60	60	1800
	CCFJ64Y-W#	64	60	1800
	CCFJ75Y-W#	75	60	1800
WP6	CCFJ90Y-W#	90	60	1800
	CCFJ90Y-W#	90	50	1500
	CCFJ100Y-W#	100	50	1500
	CCFJ120Y-W#	120	50	1500
	CCFJ100Y-W#	100	60	1800
WD10	CCFJ120Y-W#	120	60	1800
	CCFJ150Y-W#	150	50	1500
	CCFJ180Y-W#	180	50	1500
	CCFJ200Y-W#	200	50	1500
	CCFJ150Y-W#	150	60	1800
	CCFJ180Y-W#	180	60	1800
CCFJ200Y-W#	200	60	1800	

- Dimensions may vary based on selected engine configuration.
- The model with # means that the generator supplier is optional.

### Main Dimensions & Dry Weight

Engine Series	Set Model	L(mm/in)	W(mm/in)	H(mm/in)	Weight (kg/lbs)
WP2.3	CCFJ12Y-W#	1287/51	700/28	1017/40	450/992
	CCFJ16Y-W#	1287/51	700/28	1017/40	450/992
	CCFJ20Y-W#	1240/49	762/30	1063/42	488/1076
	CCFJ24Y-W#	1240/49	762/30	1063/42	488/1076
	CCFJ30Y-W#	1240/49	762/30	1123/44	500/1102
	CCFJ20Y-W#	1287/51	700/28	1017/40	450/992
	CCFJ30Y-W#	1240/49	762/30	1123/44	500/1102
WP4	CCFJ40Y-W#	2020/80	914/36	1502/59	1100/2425
	CCFJ50Y-W#	2020/80	914/36	1502/59	1150/2535
	CCFJ60Y-W#	2282/90	914/36	1502/59	1380/3042
	CCFJ64Y-W#	2282/90	914/36	1502/59	1380/3042
	CCFJ75Y-W#	2282/90	914/36	1502/59	1430/3153
	CCFJ40Y-W#	2020/80	914/36	1502/59	1100/2425
	CCFJ50Y-W#	2020/80	914/36	1502/59	1150/2535
	CCFJ60Y-W#	2282/90	914/36	1502/59	1380/3042
	CCFJ64Y-W#	2282/90	914/36	1502/59	1380/3042
	CCFJ75Y-W#	2282/90	914/36	1502/59	1430/3153
WP6	CCFJ90Y-W#	2282/90	914/36	1502/59	1560/3439
	CCFJ90Y-W#	2600/102	950/37	1317/52	1530/3373
	CCFJ100Y-W#	2600/102	950/37	1317/52	1530/3373
	CCFJ120Y-W#	2600/102	950/37	1317/52	1600/3527
	CCFJ100Y-W#	2600/102	950/37	1317/52	1530/3373
WD10	CCFJ120Y-W#	2600/102	950/37	1317/52	1600/3527
	CCFJ150Y-W#	2930/115	1180/46	1740/69	2250/4960
	CCFJ180Y-W#	2930/115	1180/46	1740/69	2290/5049
	CCFJ200Y-W#	2930/115	1180/46	1740/69	2290/5049
	CCFJ150Y-W#	2930/115	1180/46	1740/69	2250/4960
	CCFJ180Y-W#	2930/115	1180/46	1740/69	2290/5049
CCFJ200Y-W#	2930/115	1180/46	1740/69	2290/5049	

- Dimensions may vary based on selected engine configuration.
- The model with # means that the generator supplier is optional.



# Generator Sets

## Emergency Generator Sets



# Generator Sets

## Emergency Generator Sets



### Commercial Ratings

Engine Series	Set Model	Power KW	Frequency Hz	rpm
WD12	CCFJ250Y-W#	250	50	1500
	CCFJ250Y-W#	250	60	1800
WP13	CCFJ300Y-W#	300	50	1500
	CCFJ320Y-W#	320	50	1500
	CCFJ300Y-W#	300	60	1800
	CCFJ320Y-W#	320	60	1800
6M33	CCFJ350Y-W#	350	50	1500
	CCFJ400Y-W#	400	50	1500
	CCFJ450Y-W#	450	50	1500
	CCFJ500Y-W#	500	50	1500
	CCFJ350Y-W#	350	60	1800
	CCFJ400Y-W#	400	60	1800
	CCFJ470Y-W#	470	60	1800
	CCFJ500Y-W#	500	60	1800
	CCFJ600Y-W#	600	50	1500
	CCFJ700Y-W#	700	50	1500
12M33	CCFJ800Y-W#	800	50	1500
	CCFJ900Y-W#	900	50	1500
	CCFJ1000Y-W#	1000	50	1500
	CCFJ600Y-W#	600	60	1800
	CCFJ700Y-W#	700	60	1800
	CCFJ800Y-W#	800	60	1800
CCFJ900Y-W#	900	60	1800	
CCFJ1000Y-W#	1000	60	1800	

### Main Dimensions & Dry Weight

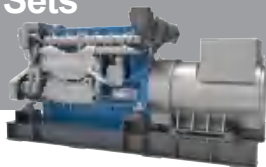
Engine Series	Set Model	L(mm/in)	W(mm/in)	H(mm/in)	Weight (kg/lbs)
WD12	CCFJ250Y-W#	2910/115	1180/46	1790/70	2610/5754
	CCFJ300Y-W#	3072/121	1140/45	1587/62	2750/6063
WP13	CCFJ320Y-W#	3072/121	1140/45	1587/62	2750/6063
	CCFJ350Y-W#	3900/154	1600/63	2075/82	4500/9921
6M33	CCFJ400Y-W#	3900/154	1600/63	2075/82	4700/10362
	CCFJ450Y-W#	4100/161	1600/63	2075/82	5600/12346
	CCFJ470Y-W#	4100/161	1600/63	2075/82	5600/12346
	CCFJ500Y-W#	4100/161	1600/63	2075/82	5600/12346
12M33	CCFJ600Y-W#	4800/189	2198/87	2463/97	8400/18519
	CCFJ700Y-W#	4800/189	2198/87	2463/97	8700/19180
	CCFJ800Y-W#	5200/205	2198/87	2463/97	8900/19621
	CCFJ900Y-W#	5200/205	2198/87	2463/97	8900/19621
	CCFJ1000Y-W#	5200/205	2198/87	2463/97	8900/19621

- Dimensions may vary based on selected engine configuration.
- The model with # means that the generator supplier is optional.

- Dimensions may vary based on selected engine configuration.
- The model with # means that the generator supplier is optional.

# Generator Sets

## Gas Generator Sets



# Generator Sets

## Silent Generator Sets



### Commercial Ratings

Engine Series	Set Model	Power KW	Frequency Hz	rpm
WP4	CCFJ24J-W#	24	50	1500
	CCFJ30J-W#	30	50	1500
	CCFJ50J-W#	50	50	1500
WP6	CCFJ64J-W#	64	50	1500
	CCFJ75J-W#	75	50	1500
	CCFJ90J-W#	90	50	1500
	CCFJ100J-W#	100	50	1500
WP13	CCFJ150J-W#	150	50	1500
	CCFJ200J-W#	200	50	1500
	CCFJ200J-W#	200	60	1800
6M33	CCFJ250J-W#	250	50	1500
	CCFJ300J-W#	300	50	1500
	CCFJ350J-W#	350	50	1500
	CCFJ400J-W#	400	60	1800

### Main Dimensions & Dry Weight

Engine Series	Set Model	L(mm/in)	W(mm/in)	H(mm/in)	Weight (kg/lbs)
WP4	CCFJ24J-W#	1750/69	892/35	1095/43	840/1852
	CCFJ30J-W#	1750/69	892/35	1095/43	860/1896
	CCFJ50J-W#	2100/83	990/39	1330/52	1245/2745
WP6	CCFJ64J-W#	2100/83	990/39	1330/52	1280/2822
	CCFJ75J-W#	2100/83	990/39	1330/52	1325/2921
	CCFJ90J-W#	2150/85	990/39	1330/52	1450/3197
	CCFJ100J-W#	2150/85	990/39	1330/52	1450/3197
WP13	CCFJ150J-W#	2529/100	1161/46	1549/61	2160/4762
	CCFJ200J-W#	2529/100	1161/46	1549/61	2200/4850
	CCFJ250J-W#	3010/119	1460/57	1640/65	3990/8796
6M33	CCFJ300J-W#	3010/119	1460/57	1640/65	4040/8907
	CCFJ350J-W#	3010/119	1460/57	1640/65	4190/9237
	CCFJ400J-W#	3010/119	1460/57	1640/65	4190/9237

- Dimensions may vary based on selected engine configuration.
- The model with # means that the generator supplier is optional.

### Commercial Ratings

Engine Series	Power KW	Frequency Hz	rpm
WP2.3	12-30	50/60	1500/1800
WP3.2	16-30	50/60	1500/1800
WP2.3N	30-64	50/60	1500/1800
WP4	40-90	50/60	1500/1800
WP4.1N	64-90	50/60	1500/1800
WP6	90-120	50/60	1500/1800
WP10	150-200	50/60	1500/1800
WP13	250-300	50/60	1500/1800

### Main Dimensions & Dry Weight

Engine Series	L(mm/in)	W(mm/in)	H(mm/in)	Weight (kg/lbs)
WP2.3	1620/64	870/34	1020/40	520/1146
WP3.2	1430/56	740/29	1020/40	650/1433
WP2.3N	1410/56	840/33	1040/41	710/1565
WP4	1900/75	880/35	1497/59	1300/2866
WP4.1N	1780/70	930/37	1080/43	1080/2381
WP6	2390/94	1060/42	1370/54	1500/3307
WP10	2735/108	1350/53	1630/64	2550/5622
WP13	2885/114	1250/49	1967/77	3300/7275

- Dimensions may vary based on selected engine configuration.
- The model with # means that the generator supplier is optional.



## Propulsion System

High Performance • High Quality • High reliability



## Propulsion System Solutions

Weichai propulsion system base on the core advantages of the engine maker and has been committed to providing customers with ideal solutions. At present, the company has a professional propulsion team of more than 20 people with master's and doctoral degrees, which can provide a package solutions for various types of vessels, such as fixed pitch propeller, control pitch propeller, azimuth, and thruster. The company has complete propulsion system simulation and calculation capabilities, as well as rich integration and supporting experience. It can provide integration of main propulsion diesel engines, gearboxes, high flexible couplings, shafting and propellers, as well as DP power positioning systems.



Traditional propulsion system package

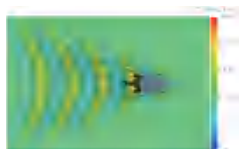


Electrical propulsion system package

# Propulsion System Solutions

## Virtual Pool

At present, the team has built a virtual data pool for speed, rotation, and seakeeping. The comparison between weichai simulation data and real testament result in inner water pool shows that the error is within 3%.



Resistance



Self sailing



Seakeeping



Rotation

## Theoretical Efficient Propeller Design

The company has a propeller digital design platform based on circulation theory. By optimizing blade geometry, the propeller achieves the best balance between maximum efficiency and minimum cavitation. At the same time, the most matching blade is designed for each ship according to the wake field measured by the numerical pool.



Circulation theory propeller design



Surface element method for propeller performance prediction



Prediction of cavitation performance of RANS propeller



FPP

Energy saving vortex elimination fin

Ducted propeller

# Marine Diesel Engine Monitor

## Product Overview

Weichai Ship Monitor is a comprehensive monitoring, control and protection solution for all types of ships. Using advanced operating system, intelligent module, with multi-language, multi-function, easy operation, less wiring and other advantages, to achieve a single diesel engine local control, remote control, monitoring alarm and other functions, meet the requirements of CCS certification.

## Standard Monitor



Local monitor



Remote monitor

## Product Feature

- Intelligent network connection: 4G communication, Beidou GPS dual-mode positioning, equipped with Weichai ship networking cloud platform, to achieve remote monitoring of ships、 health management, fleet supervision;
- Maintenance reminder: Maintenance reminder based on engine running time;

- Maintenance guide: Match the fault maintenance manual of the electronic control machine, accurately determine the fault, and provide solutions;
- Event record: Event record storage is locally traceable based on event and time;
- Internationalization: Support multi-language, multi-country unit switch display;
- Interchangeability: The same instrument can be used for a variety of models.



## Propulsion System Solutions

### Premium Monitor



Local monitor



Remote monitor

### Product Feature

- Built-in PLC: with PLC editor and monitor;
  - Variable extended module: supports multiple analog and switching inputs and outputs;
  - Redundant module design: Supports automatic switchover between active and standby modules, and automatic switchover between active and standby power supplies;
  - Speed control: Support J1939/J1587, Modbus, switching and analog signal control speed;
  - Communication mode: Support RS232, RS485, Modem, Modbus, Internet or Ethernet communication;
- History: Event and time based history is used to trace issues.

## Main Engine Monitoring and Remote Control System

### Product Feature

Based on the modular design, various parameters of the engine gear box are accurately measured, and communication and control with the engine, remote control device and remote monitoring device are carried out through the electrical interface to realize the functions of local control, remote control, monitoring and alarm of a single diesel engine.

The local control box is equipped with dual display screen, Anti-contact emergency stop switch and operation button, and the monitoring alarm, control and security protection units are independent of each other, meeting the requirements of css certification.

## Product Feature



- All metal reinforced sealed chassis
- Special color screen displays main engine status and alarm information
- Special color screen displays main engine security information
- Anti-contact hard-wired emergency stop switch
- Anti-contact override switch
- Engine start, stop, speed control and display
- Gear box shift control and display
- Abundant interface functions, meet a variety of models

## Product Overview

By accurately measuring the handle action, it is converted into the control instructions of the engine and gearbox in real time, and the gear status is displayed synchronously. The digital design can easily achieve single-machine, dual-machine, three-machine and four-machine power collocation, while meeting the application scenarios of single-station, dual-station and multi-station. Exquisite structural design, presenting silky feel and clear mechanical feedback, providing smooth power handling experience.

## Product Feature



- All metal reinforced sealed housing
- High precision non-contact linear throttle stroke sensing
- Supports up to 8 control sites
- Main engine and gearbox status display
- Supports one-click, dual-engine synchronization
- Support berthing mode
- Support warm up mode
- One-click dimming is supported

IP65 protection grade, outdoor all-weather application